

# The Henrichenburg ship lift

## A lift for ships

The crowds were jubilant when Kaiser Wilhelm II officially opened the Henrichenburg ship lift on 11<sup>th</sup> August 1899. Over 100 years later vi-

The main towers

sitors are still full of enthusiastic appreciation for this, the largest construction on the Dortmund-Ems canal. The **gigantic lift** has now been out of operation for over 30 years, but our museum brings the history of the ship lift and the people who worked on the canal vividly back to life.

A stairway brings visitors up to the bridge between the two main towers. From here they can enjoy a fantastic view over the steel construction far into the distance

beyond the canals near Waltrop. In the historic **engine house** you will find out how the canal and the ship lift were built. A large model will show you the technical secrets which enabled vessels to be raised 14 metres from one level of the canal to the other.

We have a unique collection of floating equipment and **historic boats** at anchor in the harbour immediately in front of the ship lift. Once on board you can find out, for example, how a

typical waterway family lived and worked over 50 years ago. On special occasions we take visitors out for a trip on one of our historic boats. Several times a day the **Henrichenburg pleasure boat** leaves the museum quay for an excursion on the canal. So why not climb aboard!

## The main artery of the Ruhrgebiet

The opening of the Dortmund-Ems canal created a new commercial artery for the Ruhrgebiet. Mass goods like coal, ore and building materials could now be directly transported along the canal to the harbours on the **North Sea**, or brought from there into the Ruhrgebiet. The ship lift was a **hive of activity**. 40 boats a day were taken up and down in the moving troughs. Nonetheless the boatmen often had to wait several days before they could get through.

The old ship lift served the canal for 70 years before being



Restoration 1988

replaced by a modern ship lift in the immediate vicinity. After its closure the splendid old construction fell into a state of dilapidation until the regional authority decided to take it over and restore it as one of its sites belonging to the Westphalian Industrial Museum. In 1995 the ship lift was awarded the **European Museum prize**.



Imposing industrial monument



Historic boats in the upper water

# Discovering history

## Our exhibition

Nowadays it is scarcely conceivable that over 100 years ago two of the most important tools used to build the Dortmund-Ems canal were pickaxes and shovels. The project was an incredible tour de force. **Thousands of workers**, many of whom came from abroad, were involved in digging out by hand the 230 km long water channel, the sluice chambers and the deep shafts that held the floating chambers of the ship lift.

This was an engineering triumph. Because of the incredible technical achievement boats were able to move quickly and efficiently 14 metres up and down between the two levels of the canal. If you want to find out exactly how the ship lift worked you can try your hand at a model in the boiler and engine house in the museum. This was where the electricity needed to drive the ship lift was once produced by **steam engines**.

Cargo bay in the museum boat 'Franz-Christian'



Capt'n Fischer and his son steering the 'Franz-Christian'

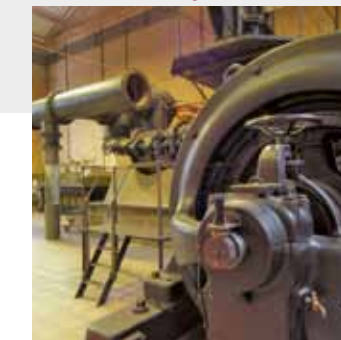
On our museum ship, the **'Franz-Christian'** you can find out more about how the boatmen and their families lived on board. Conditions were anything but ro-

Washday on board



mantic. The tiny cabins in which the families cooked, slept and ate will give you a vivid impression of the lack of space under the deck. On the **'upper water'** the harbour scenery is typical of the time around 1900. The 'Ostara' barge is tied up at the quay alongside other historic boats. From time to time there are **special exhibitions** in the loading room on the barge. The revolving crane, the flap gate and the lift bridge are all original historic features.

In the engine house



## Underway with Capt'n Henri

Capt'n Henri and his young ship boy Jan will take young guests on their own special tour. At several stops along the route of the **children's exhibition** the jolly old capt'n will invite them to take part in hands-on activities and try things out for themselves. On a roundabout of pictures they can even raise and lower ships with comic characters. On a model of the ship lift they can also splash about at will and experiment with water and boats. In doing so they will find out for themselves the technical secrets behind raising and lowering boats.

There are plenty of things to discover on the upper water. To name but one example: here the children can find out what life and working conditions were like for a **ship's boy** many years ago. Boys and girls can go aboard an old barge and test for themselves how boats used to be loaded and unloaded.

Discovering the canal



Capt'n Henri and his mate Jan

Steamboat trip at a museum party



Ship's boy in action



Peak period at the ship lift in the 1950s

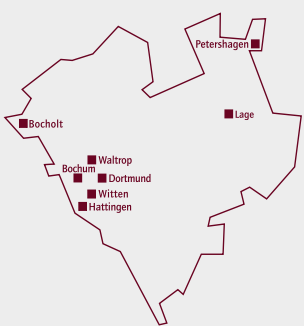




# Experiencing history

**LWL-Industriemuseum**  
Westphalian State Museum  
of Industrial Heritage

The LWL-Industriemuseum is an umbrella museum comprising eight different industrial heritage sites. It was set up in 1979 by the Regional Association of Westphalia-Lippe (LWL). It was not only the first museum of its kind in Germany, it is also the largest. Its mission is to communicate, research and preserve the culture of the industrial era from the earliest years to the present day.



Eight Sites – One Museum  
[www.lwl-industriemuseum.de](http://www.lwl-industriemuseum.de)

Visit our partner,  
the LVR-Industriemuseum

We are also participating  
**RUHR.2010**  
European Capital of Culture

Photos: A. Hudemann, M. Holtappels, LWL-Industriemuseum

## Our programme of activities

Why not get yourself hired as a ship's boy - or girl?! This is just one of many activities we can offer for **school parties** or **children's birthdays**. A huge number of educational programmes are available for boys and girls from the age of 4 upwards. We advertise them all on the internet, and will also be delighted to send you a **flyer** on request.

Families who want to explore the museum on their own can pick up 'discovery material' at the box office. Once you have answered all the questions you will be well on your way to earning a **'ship lift diploma'**. Do you want to show your friends and relations the ship lift? In this case the best solution is to take part in a free guided tour on Sundays at 11 o'clock. If you want to combine culture with food and drink you should book one of our **evening guided tours** which is followed by a meal in a nearby restaurant.

From March to October you can take a trip along the canal on the **'Henrichsburg' pleasure boat** every day. Departure times and prices can be found at: [www.lwl-industriemuseum.de](http://www.lwl-industriemuseum.de).

The museum shop has a rich selection of books – including our museum guide – and gifts related to the theme of water.

Most of the museum site is barrier-free. We offer **special guided tours** for persons with visual handicaps.



Museum shop



The 'Henrichsburg' pleasure steamer



Building a boat



An evening tour through the illuminated ship lift

## Things are really buzzing here!

The ship lift has long been recognized as a **culture forum** for the region, and a venue for talks, music and cabaret evenings. Major events like the **Museum Festival** and 'Extra Shift: the long night of industrial heritage' are huge attractions with the general public. Furthermore we offer regular tours on our historic boats. A particularly popular attraction is the annual Christmas market on the canal bank.

If you are considering bringing your loved one into the safe harbour of marriage we can also offer you the appropriate venue!

During the summer season bridal couples can tie the knot on our historic barge, the 'Ostara'.

You can find all the dates you require on the internet. Or simply request our **Calendar of Events**.



Steam day at the ship lift

# Tips for your day out

## Leisure on the canal

The ship lift is a part of the **Waltrop Lock Park**. If you purchase a so-called **Combi-ticket** you can also visit the museum and exhibition room in the new lock, and take a stroll through a century of canals, locks and ship-lifts.

Waltrop and the surrounding countryside is ideal for cyclists. Our museum is situated on the IBA cycle trail and the Dortmund-Ems canal cycle trail, both of which are part of the **network of cycle trails** in the Ruhrgebiet. You can also reach us easily by boat. The 'Santa Monica' offers regular excursions to Henrichsburg from Dortmund, Hamm, Rünthe and Lünen.

Our **gastronomy bus** - a London double-decker built in 1959 - offers visitors a small selection of snacks and drinks. When the weather is fine you can sit outside



The 'gastro bus'

and enjoy the view of the ship lift and canal bank. Groups can reserve snacks and drinks in advance. Tel. 0049 (0) 2363 918313. The bus is open during the summer months between Tuesdays and Saturdays from 11.00 to 18.00 (We reserve the right to make changes). Other cafés and restaurants can be found in the vicinity of the ship lift.

**Useful internet addresses:**  
[www.waltrop.de](http://www.waltrop.de)  
[www.route-industriekultur.de](http://www.route-industriekultur.de)  
[www.erih.net](http://www.erih.net)  
[www.santa-monika.de](http://www.santa-monika.de)  
[www.santamonika.de](http://www.santamonika.de)



Cycle tour on the canal

## Contact

**LWL-Industriemuseum**  
Westfälisches Landesmuseum für  
Industriekultur  
**Schiffshebewerk Henrichsburg**  
Am Hebewerk 2  
45731 Waltrop  
Fon 0049 (0)2363 9707-0  
Fax 0049 (0)2363 9707-12  
E-Mail: [schiffshebewerk@lwl.org](mailto:schiffshebewerk@lwl.org)  
[www.lwl-industriemuseum.de](http://www.lwl-industriemuseum.de)

**Opening hours**  
Tue-Sun: 10.00-18.00  
Final admission, 17.30  
Closed 24. Dec. to 1. January

**How to find us**  
By bus and rail: From Recklinghausen Hbf: take bus 231 in the direction of Lünen-Brambauer; alight 'Kanalstraße'. From Dortmund Hbf: take tram/U-bahn U 41 to 'Lünen-Brambauer Verkehrshof', then bus 284/231 (via Waltrop), alight 'Kanalstraße'. From Castrop-Rauxel-Hbf: take bus SB 22 to Datteln, Wittener Straße. From there it is a 10 minute walk (signposted at the crossing). You can get travel information in English at: [www.vrr.de](http://www.vrr.de)



**Admission prices\***  
Adults: 3,50 €  
Groups, max. 16 persons  
per person: 3,00 €  
Children/young people (6 to 17 incl.), school students: 2,00 €  
School students taking part in the museum education programme (2 accompanying persons free of charge): 1,10 €  
Concessions: 2,10 €  
Family day ticket: 8,00 €  
Combi-tickets are available for the LWL-Industriemuseum and the exhibition hall at the new lock.

The LWL Museum Card is available here

\* We reserve the right to make changes  
\*\* Social security recipients, students (max. age 30), apprentices, persons performing national and civilian service duties, handicapped persons, at least 80% (accompanying person free)



LWL-Industriemuseum



Waltrop

# The Henrichsburg ship lift

A lift for ships

[www.lwl-industriemuseum.de](http://www.lwl-industriemuseum.de)

**LWL**

Für die Menschen.  
Für Westfalen-Lippe.