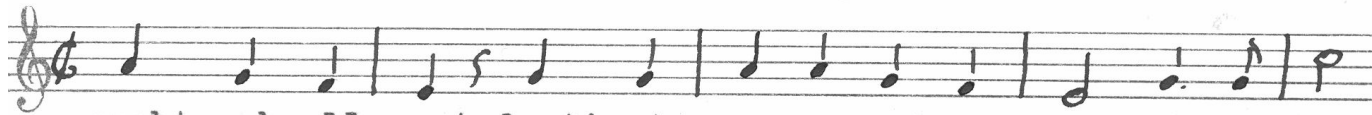


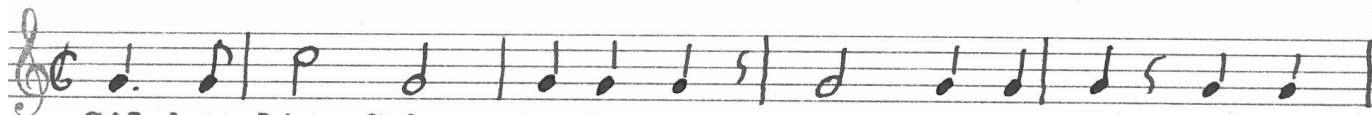
W. 2206  
Martini-Lied



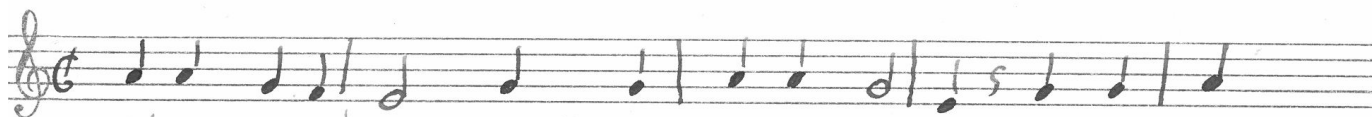
Ap-pel un de Be - ren de könnt wer all verteren Brat bern



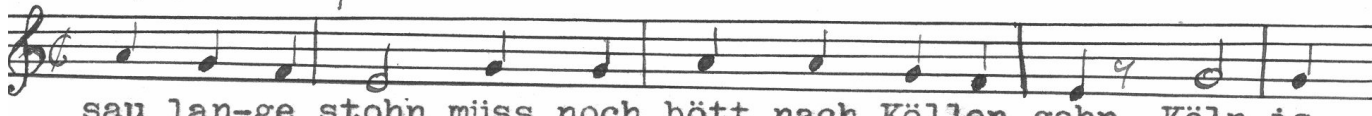
smekt auk all gaut daut's in eu nen Sül ber haut Sil berling



Sil ber ling Scheun is de Mann Scheun is de Frou Pe ter



silge Suppenkraut steiht in iu sen Gor-en lat us nicht



sau lan-ge stohn muss noch bött nach Köllen gohn Köln is



ne grau-te Stadt kriu-gen alle Kinner watt.

Varenholz  $\frac{1}{d}$ .

u

G.X

110 26 76a

Westfälisches Volksliedarchiv.

Münster i.W., Domplatz 20.