



HEROES

Our yearning for the exceptional

An exhibition presented by the LWL-Industriemuseum for the European Capital of Culture RUHR.2010 and under the patronage of North Rhine-Westphalia Minister President, Dr Jürgen Rüttgers

12. March–31. October 2010

Every age has its heroes. It makes no difference whether it's Siegfried or Superman, Joan of Arc or Lara Croft. They are our models and the people on whom we pin our hopes because they reflect our yearning for the exceptional. But why do we need heroes? And how are heroes made? Why not join us on an adventurous journey in search of these answers? It leads from Rome to the Ruhr, and from ancient times to the present day.

Although centuries separate the heroes of antiquity from those of today you'll discover a lot of common factors. And you'll be amazed. We have collected over 800 precious exhibits for the exhibition from all over Germany, our neighbouring European countries, and other countries overseas. The spectrum ranges from a mediaeval knight's coat of armour all the way to a jacket worn by the "Tatort" TV crime detective Schimanski; and from a 2000 year old baby bottle to Winnetou's silver-studded double barrel rifle.

Mediaeval family altar (section),
Museen Burg Altena,
photo: J. Nöber



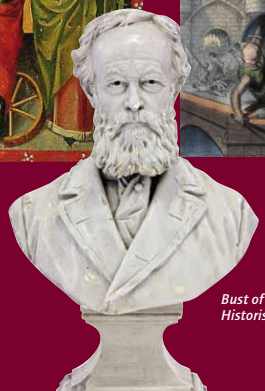
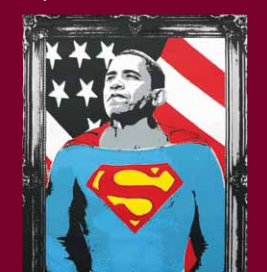
Joan of Arc in the battle, 19th-century lithograph,
photo: bpk, Dietmar Katz



Elly Beinhorn in the cockpit,
LWL-Industriemuseum



Superman Obama,
Graphic, LWL-Industriemuseum



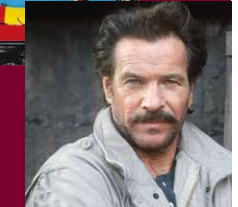
Bust of Alfred Krupp,
Historisches Archiv Krupp



Propaganda poster, 1940,
Museo Civico L. Bailo,
Collezione Salce, Treviso



"Hattingen must be kept alive",
Banner, LWL-Industriemuseum



"Tatort" detective Horst Schimanski
(section), WDR, photo: S. Falke

The venue: Henrichshütte Hattingen

The Henrichshütte iron and steel works in Hattingen began operations in 1854 and has a rich history and tradition. Over 10,000 workers used to work here producing iron and steel. In 1987 the last blast furnace – the oldest still existing in the Ruhrgebiet – was blown out despite bitter protests from the workers. One of the most popular attractions on the site is the glass elevator which takes visitors to the top of the blast furnace, 55 meters above the ground.

After touring the museum and the exhibition you should not miss the opportunity to take a look inside the historic blast house, or enjoy the culinary delicacies in the "HENRICH'S" restaurant.

www.lwl-industriemuseum.de
www.henrichs-restaurant.de

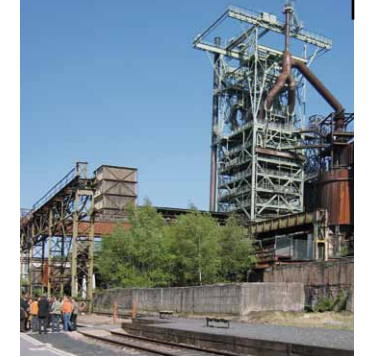
How to spend the day in Hattingen

The old town centre, containing over 140 picturesque half-timbered houses, is well worth a visit. You can take a stroll through the narrow streets, go shopping for souvenirs or enjoy a tasty meal in one of the local restaurants. But that's not all Hattingen has to offer. Nearby you can find mansions and castles, museums and even some beautiful hilly countryside.

And if you want some more industrial heritage why not take a trip to the LWL-Industriemuseum at the Nightingale Mine in Witten! For further information on hotels and other catering establishments see:

www.hattingen.de
www.ruhr-tourismus.de
www.route-industriekultur.de
www.ruhrtalradweg.de
www.lwl-industriemuseum.de

Henrichshütte Hattingen in the evening,
photo: A. Specht, www.fotorevier.net



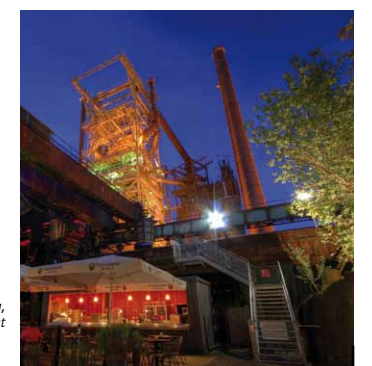
Henrichshütte Hattingen, LWL-Industriemuseum



Hattingen old town centre, St Georges church tower,
photo: Ruhr Tourismus GmbH



HENRICH'S restaurant, LWL-Industriemuseum



Admission: Museum and the HEROES exhibition

Adults:	6 €
Adult Groups (16 or more) per person:	5 €
Children (6–17) and youths:	4 €
Concessions:	4 €
Group School children:	2 €
Family ticket:	13 €

Tel.: 0049 (0)2324 9247-142, Fax: 0049 (0)2324 9247-143,
E-Mail: helden@lwl.org

Advance ticket sales

Via NRW (North Rhine-Westphalia)-Ticket

- per Tel: 0049 (0)180 500 18 12
- per Internet: www.nrwticket.de
- per Post: NRW Ticket GmbH, Adenauerallee 131, 53113 Bonn, Germany

Ticket in advance (plus postage 4.90 € per order, normal post)

Adults:	6 €
Children and youths:	4 €
Family ticket:	13 €
Adult groups (16 or more) per person:	5 €
Concessions:	4 €

The RUHR.2010Tickets

Both these tickets will give you a 20% rebate on the normal admission price at the daily box office. This does not apply to tickets at the concession price of 4 €.

1. The RUHR.2010Ticket NRW (North Rhine-Westphalia)
Valid for 48 hours, free travel in buses and trains (2. class) for two persons (+ children under 6) in the whole of North Rhine-Westphalia. This comprises the whole area covered by the European Capital of Culture RUHR.2010, 48 €.

2. The RUHR.2010Ticket local
Valid for 48 hours, free travel in buses and trains (2. class) for one person (+ children under 6) in a section of the region covered by the European Capital of Culture RUHR.2010, 19 €.

Please note: Hattingen lies in the section of the region, East, Centre and South-East.

For more detailed information see:
www.ruhr2010-mit-bus-und-bahn.de

Guided tours

Guided tours for adults, young people and school classes (advance booking only): duration ca. 90 minutes – 2 hours. Price: 40 to 45 €, in English 50 to 55 €, plus admission

Open guided tours for adults and young people without advance booking: every Sunday at 15.00, 2 € per person, plus admission

Information and advance booking:
Tel.: 0049 (0)2324 9247-142 , Fax: 0049 (0)2324 9247-143,
E-Mail: helden@lwl.org

We also have offers for people with audio or visual impairment.

Audio guides

- For adults in German or English, ca. 60 minutes
- For children (only in German), ca. 30 minutes
- For people with visual impairment (only in German), ca. 80 minutes

Hire charge

- Adults: 3 €
- Groups of 10 persons or more: 2 € per person
- Children: 2 €

HEROES workshop

This participatory exhibition presents all the things children and young people imagine when they think about heroes. www.helden-werkstatt.de.

With financial assistance from:
**Der Ministerpräsident
des Landes Nordrhein-Westfalen**



Torso of an Amazon,
Sammlung Antiker Kleinkunst
der Friedrich Schiller Universität Jena,
photo: D. Graen



LWL-Industriemuseum

Westfälisches Landesmuseum für Industriekultur
Henrichshütte Hattingen
Werksstraße 31–33, 45527 Hattingen, Germany
Tel: 0049 (0)2324 9247-142
Fax: 0049 (0)2324 9247-143
E-Mail: helden@lwl.org
www.helden-ausstellung.de (English pages)
www.lwl-industriemuseum.de (English pages)

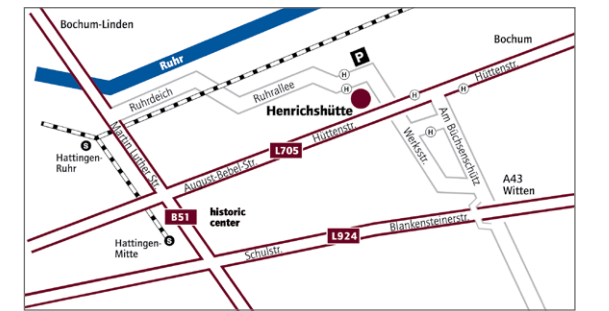
The exhibition is accessible to wheelchair users.
All texts in the exhibition are also in English.

Open

Tue – Sun 10 a.m. – 6 p.m. | Fri 10 a.m. – 9.30 p.m.
Closed Mondays except Easter Monday (5.4.) and Whit Monday (24.5.)

How to get there

By car: Take the A43 motorway and exit at "Witten-Herbede". Take the direction to Hattingen and follow the signs marked "Route der Industriekultur: Henrichshütte".
By public transport: bus stops "Henrichshütte" and "Industriemuseum". From Bochum main station, take bus CE 31 or SB 37. From Hattingen-Mitte take bus 558, SB 37 or CE 31. In the centre of Hattingen there is an S-Bahn connection to Essen (Line 3).
For more detailed information see www.vrr.de (English pages)
Detailed information for cyclists can be found on the Internet.



Accompanying programme

The exhibition will include a comprehensive side programme of classical concerts, musicals, comedy and chat shows with prominent guests etc.
For further information see: www.helden-ausstellung.de

Related exhibitions

Why not visit the accompanying exhibitions at the seven other sites belonging to the LWL-Industriemuseum?
For further information see: www.helden-ausstellung.lwl.org

Henrichshütte Hattingen

HEROES

Our yearning for the exceptional
12. March – 31. October 2010
www.helden-ausstellung.lwl.org

An exhibition in collaboration with the European Capital of Culture RUHR.2010



Title: Herakles Barnes, Akademisches Kunstmuseum Antikensammlung der Universität Bonn, photo: R. Dykja. Photos if not stated otherwise: A. Hudemann and M. Holzapfel, LWL-Industriemuseum