

HERMANN KAUFMANN
architektur im kontext



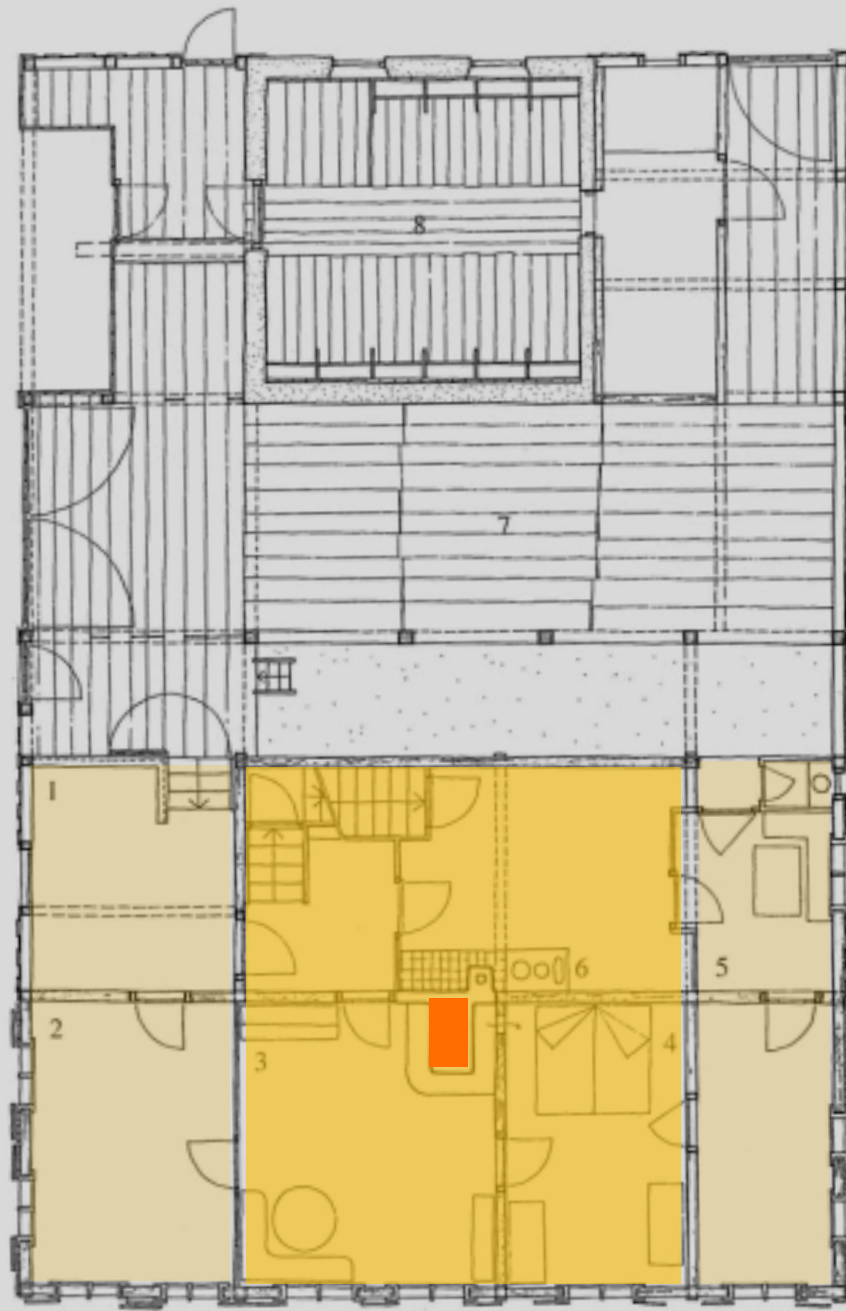




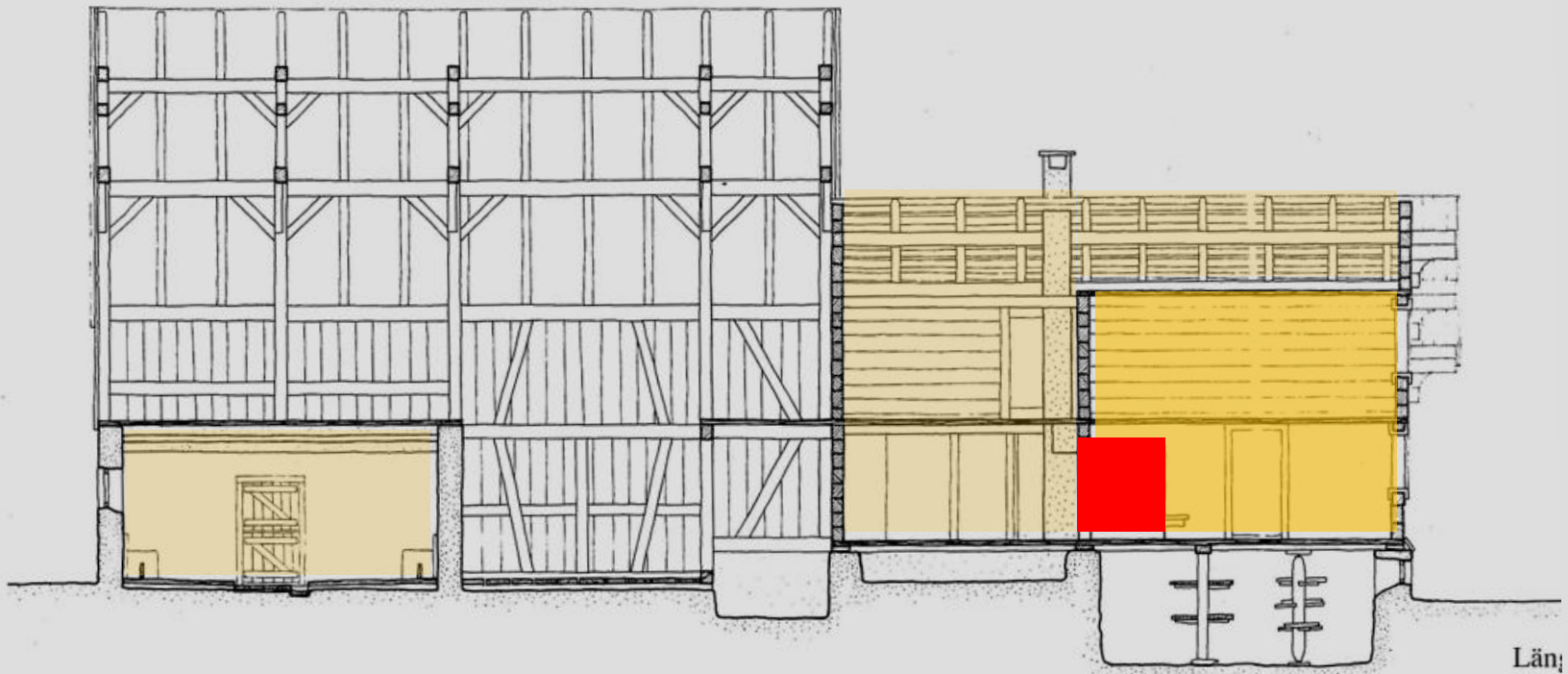








- 1. Rest vom Schopf
- 2. ehemaliger Schopf
- 3. Stube
- 4. Kammer
- 5. Eßplatz
- 6. Flurküche
- 7. Tenne
- 8. Stall



Län;



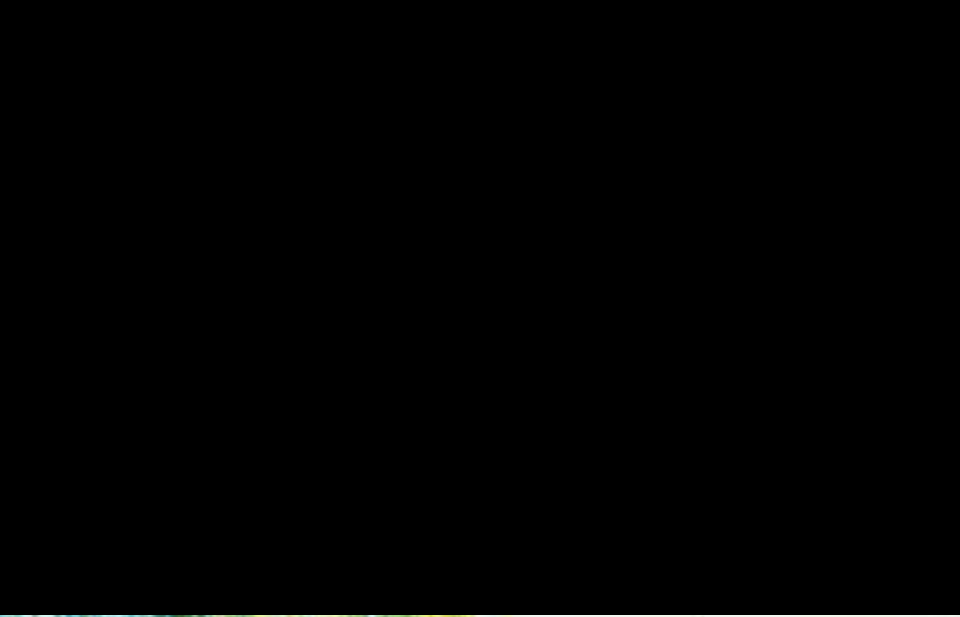




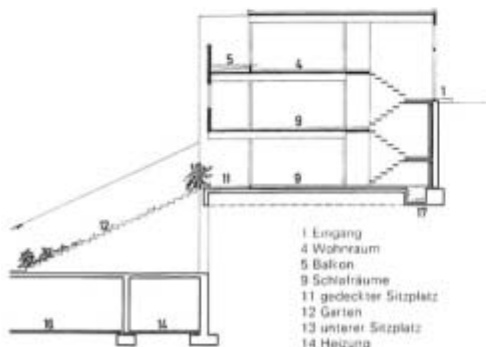




Hotel Schwanen Bizau



LEOPOLD KAUFMANN JAGDHAUS
REUTHE 1962



SCHNITT 1:50

- 1 Eingang
- 4 Wohnraum
- 5 Balkon
- 9 Schlafräume
- 11 gedeckter Sitzplatz
- 12 Garten
- 13 unterer Sitzplatz
- 14 Heizung
- 15 Zufahrt
- 16 Garage
- 17 Installation



- 1 Eingang
- 2 Garderobe
- 3 Küche
- 4 Wohn- und Essraum
- 5 Balkon
- 6 Flur
- 7 WC
- 8 Bad
- 9 Schlafräume

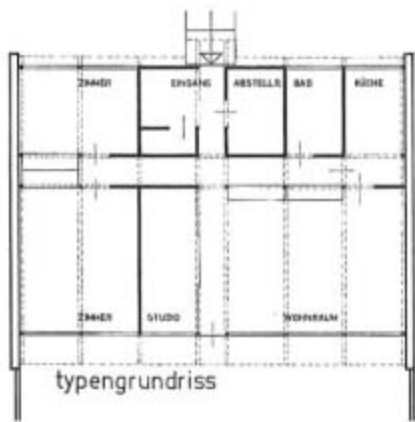
OBERGESCHOSS 1:50



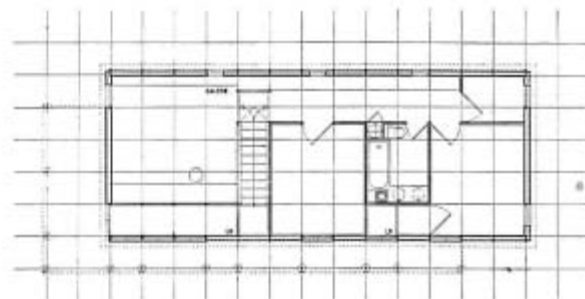
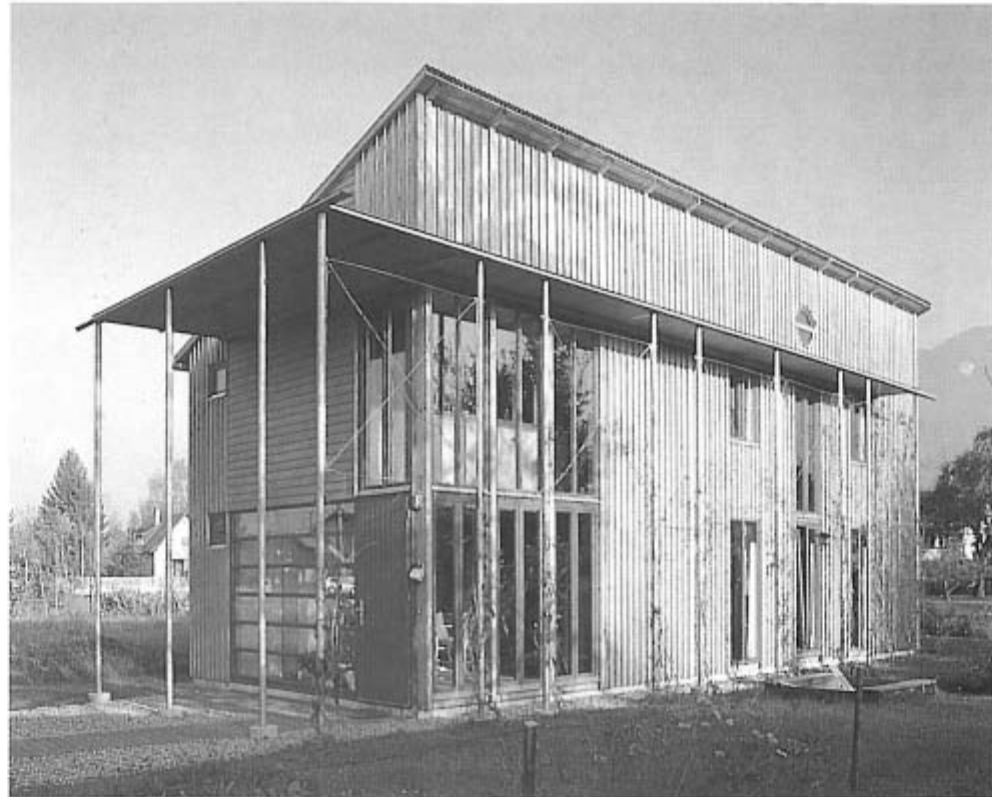
MITTELGESCHOSS 1:50



UNTERGESCHOSS 1:50



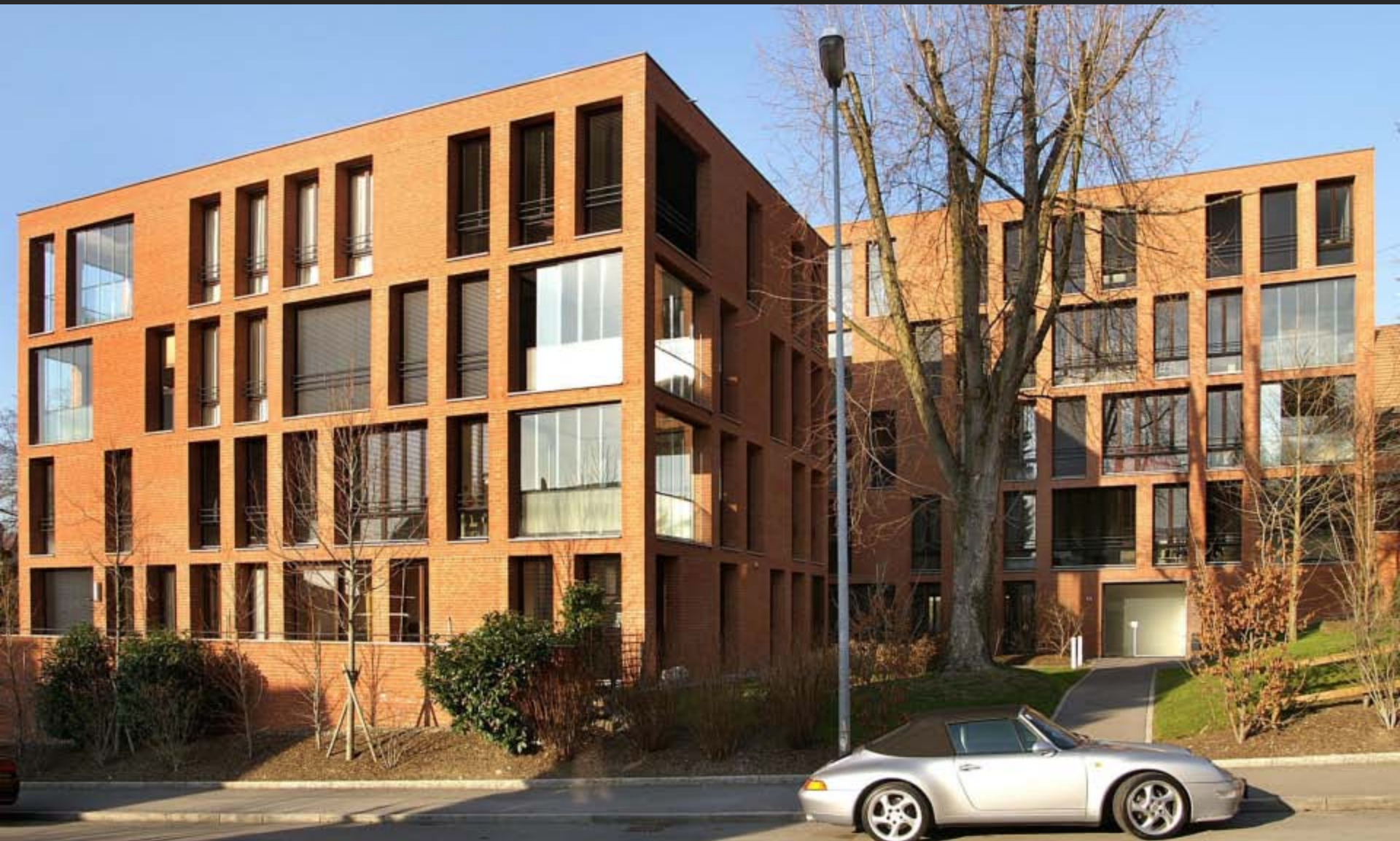
Haus Rüdissler, Hohenems
Entwurf
**Elisabeth Rüdissler &
Rudolf Wäger**
1983





















SCHULE KLAUS

DIETRICH UNTERTRIFALLER ARCHITEKTEN



SCHULE KLAUS

DIETRICH UNTERTRIFALLER ARCHITEKTEN



SCHULE KLAUS

DIETRICH UNTERTRIFALLER ARCHITEKTEN



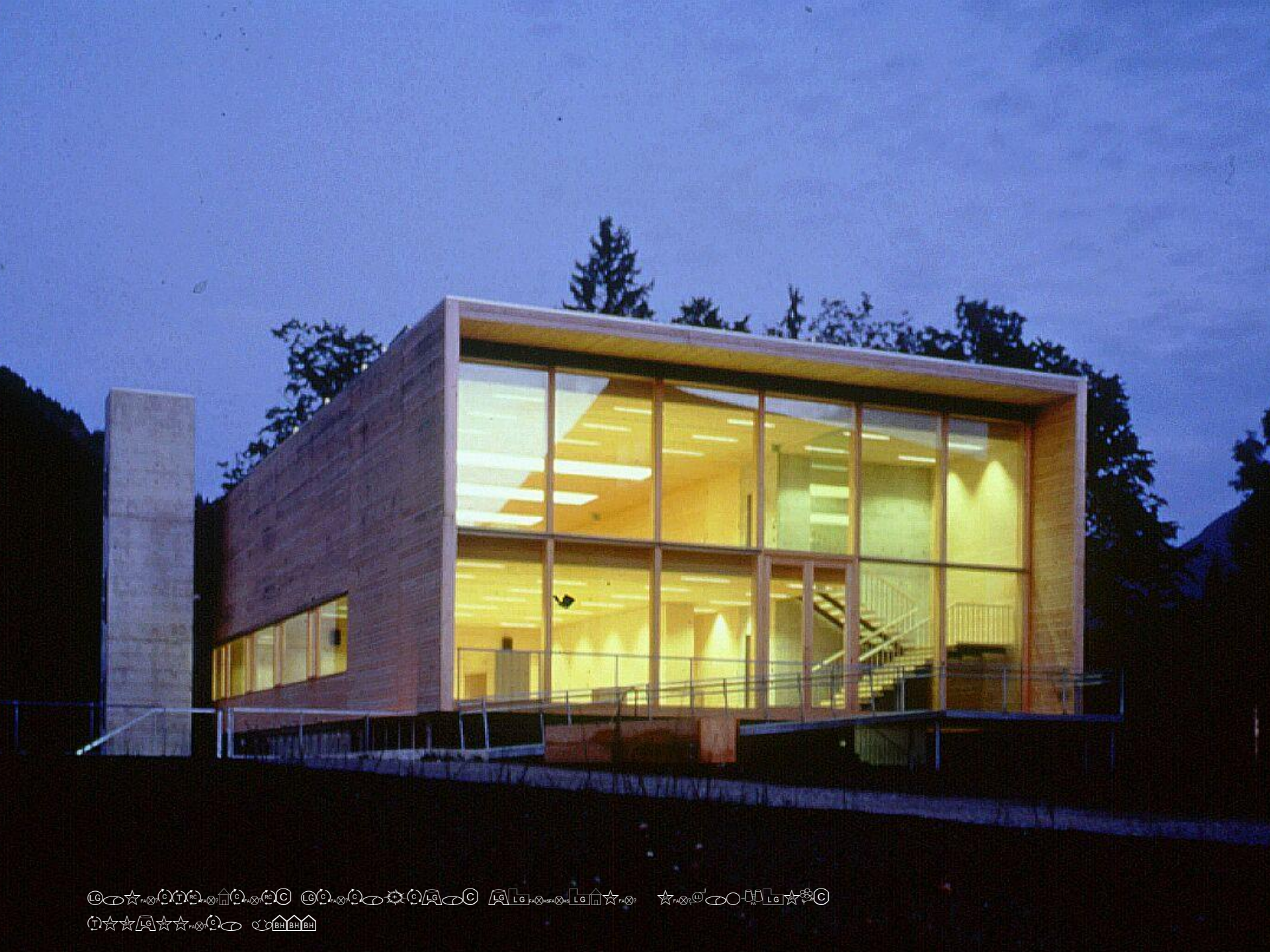






















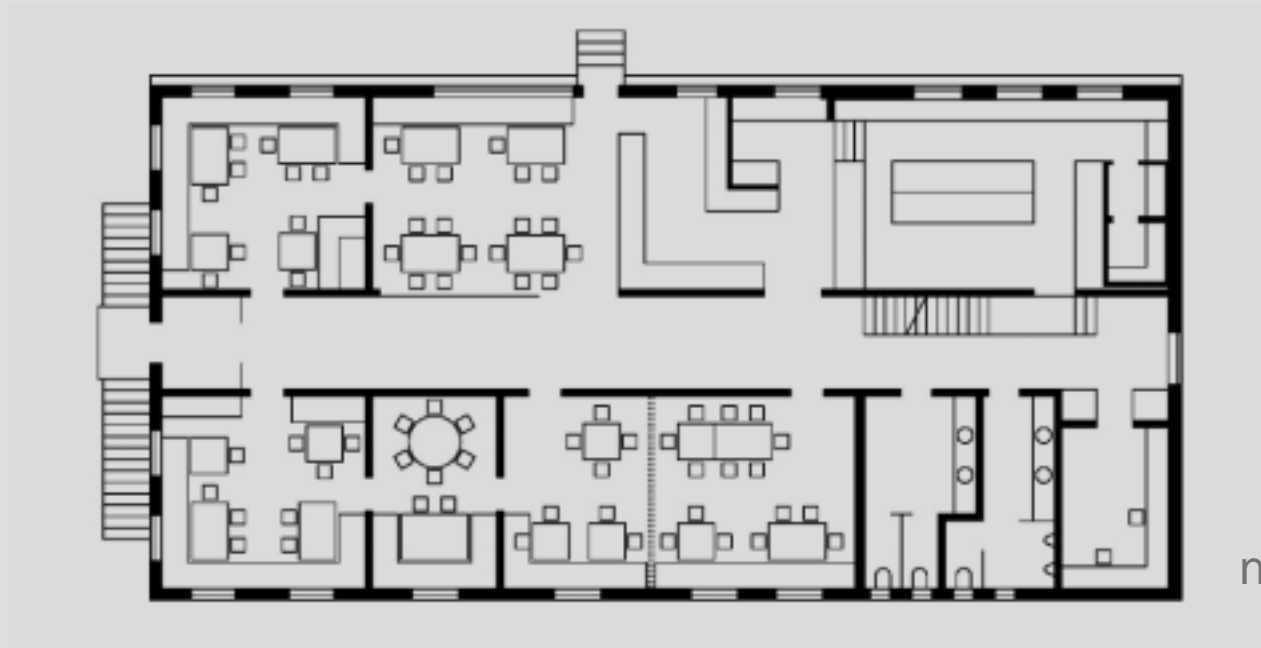
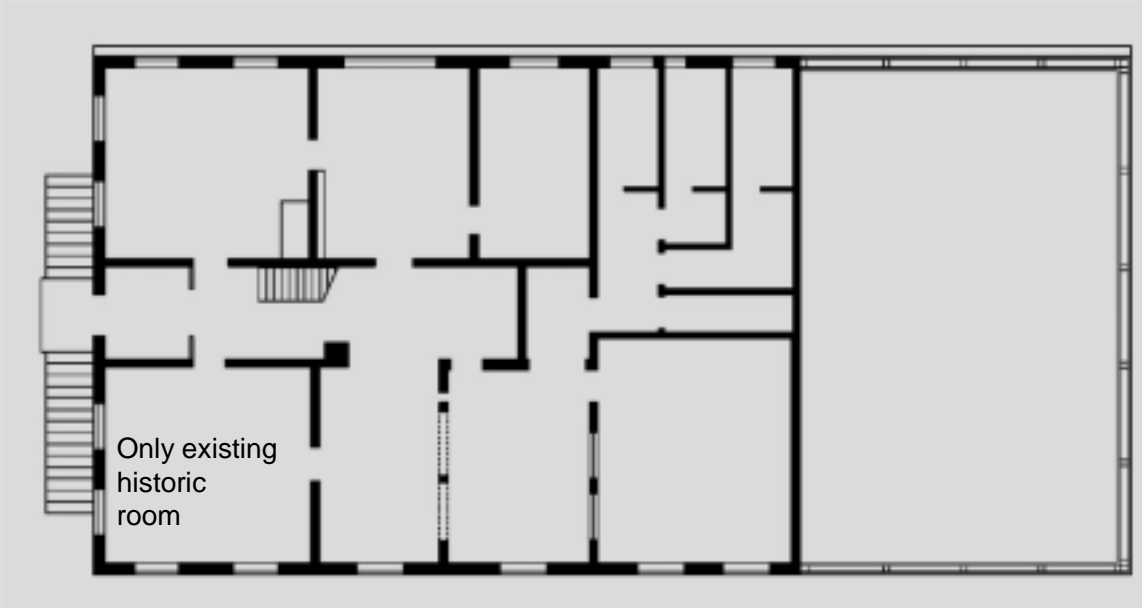














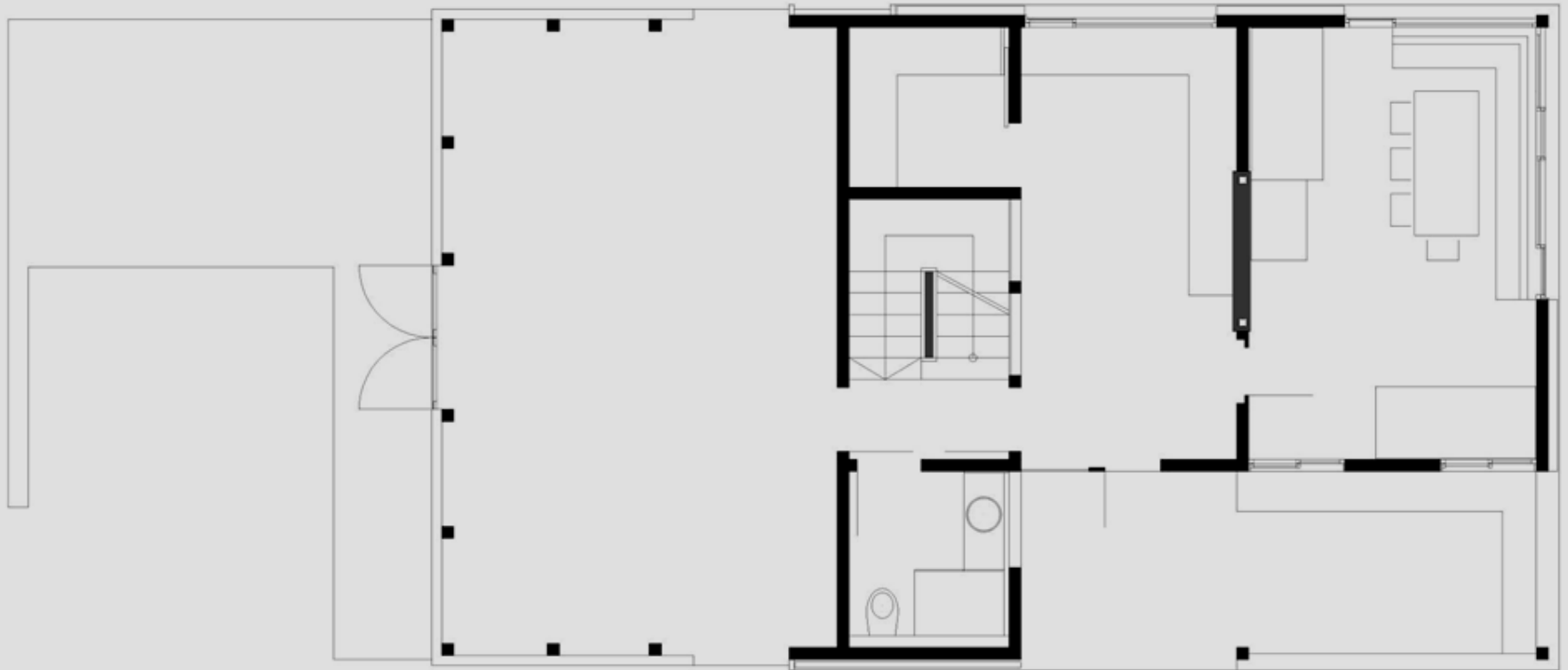


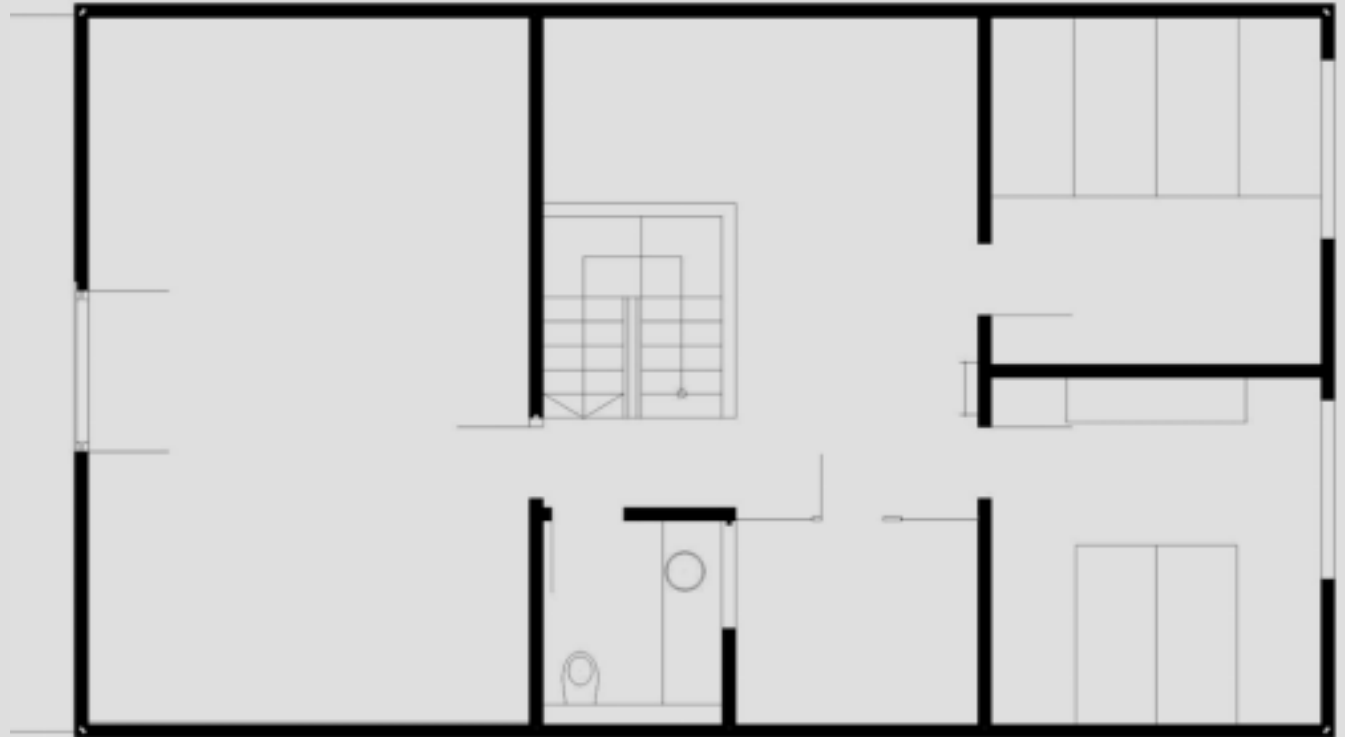


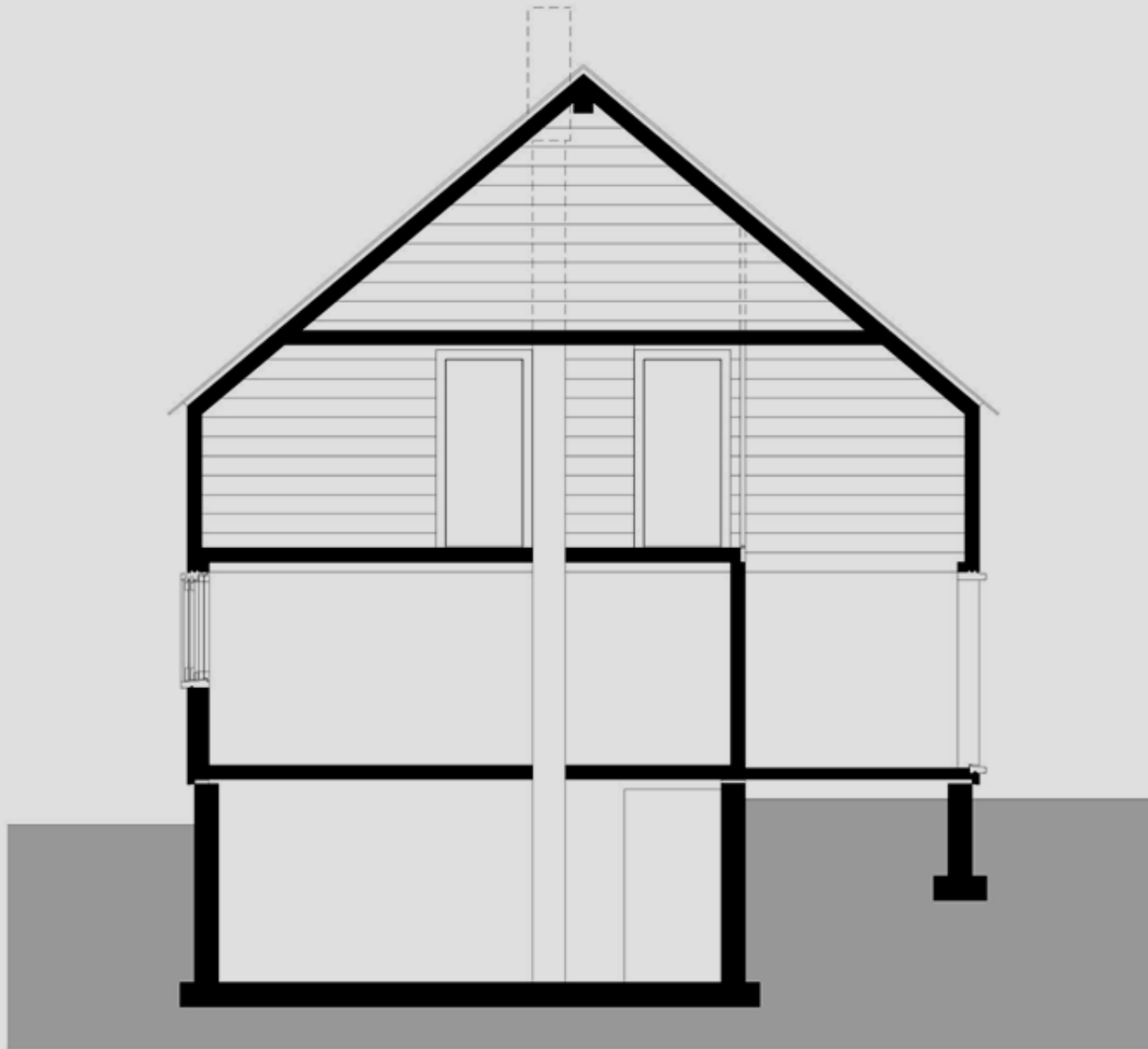




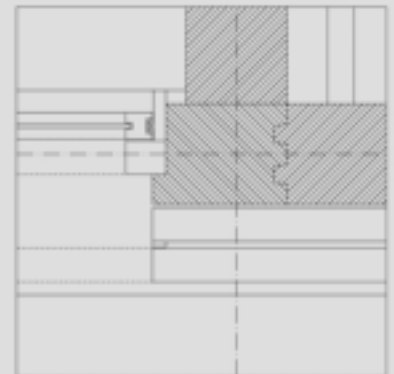
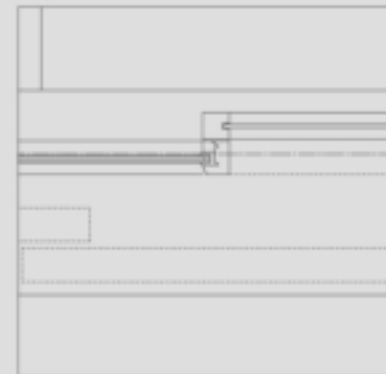
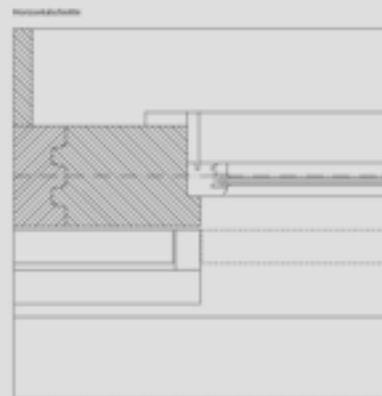
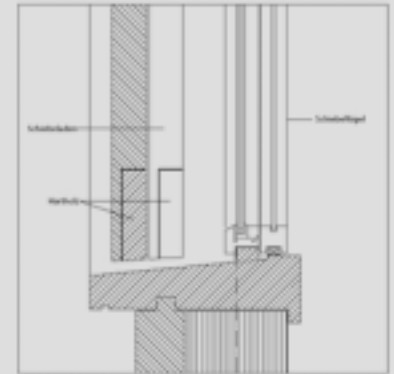
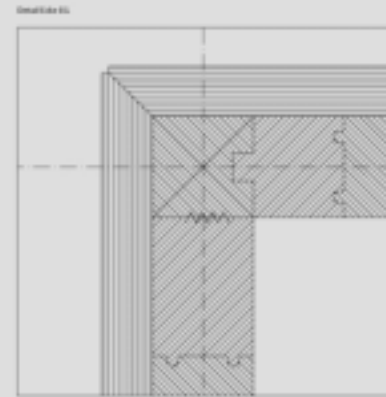
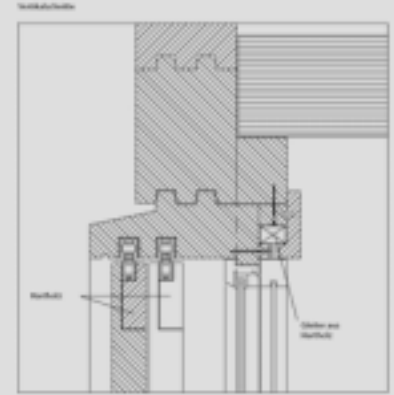
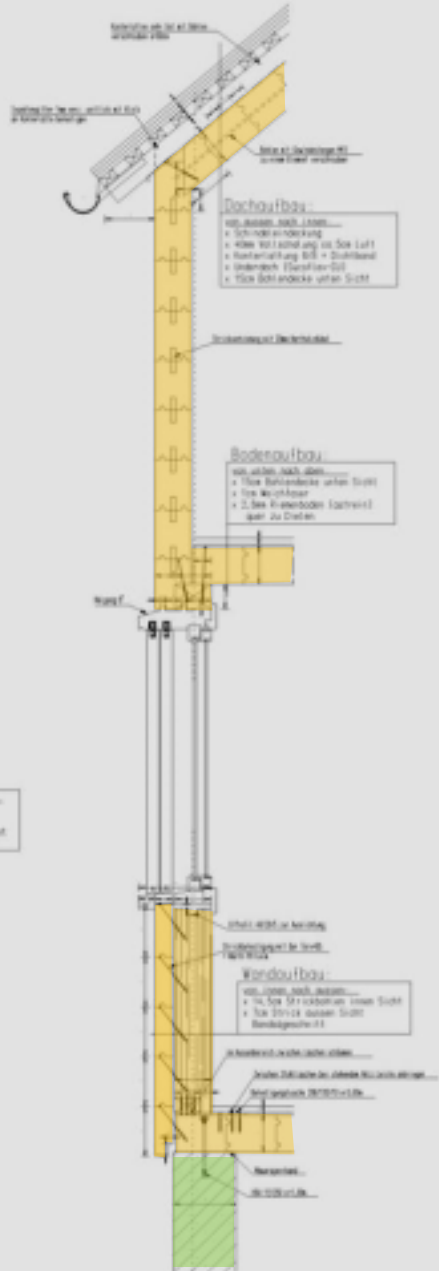








Detailschnitt A Wohnteil:











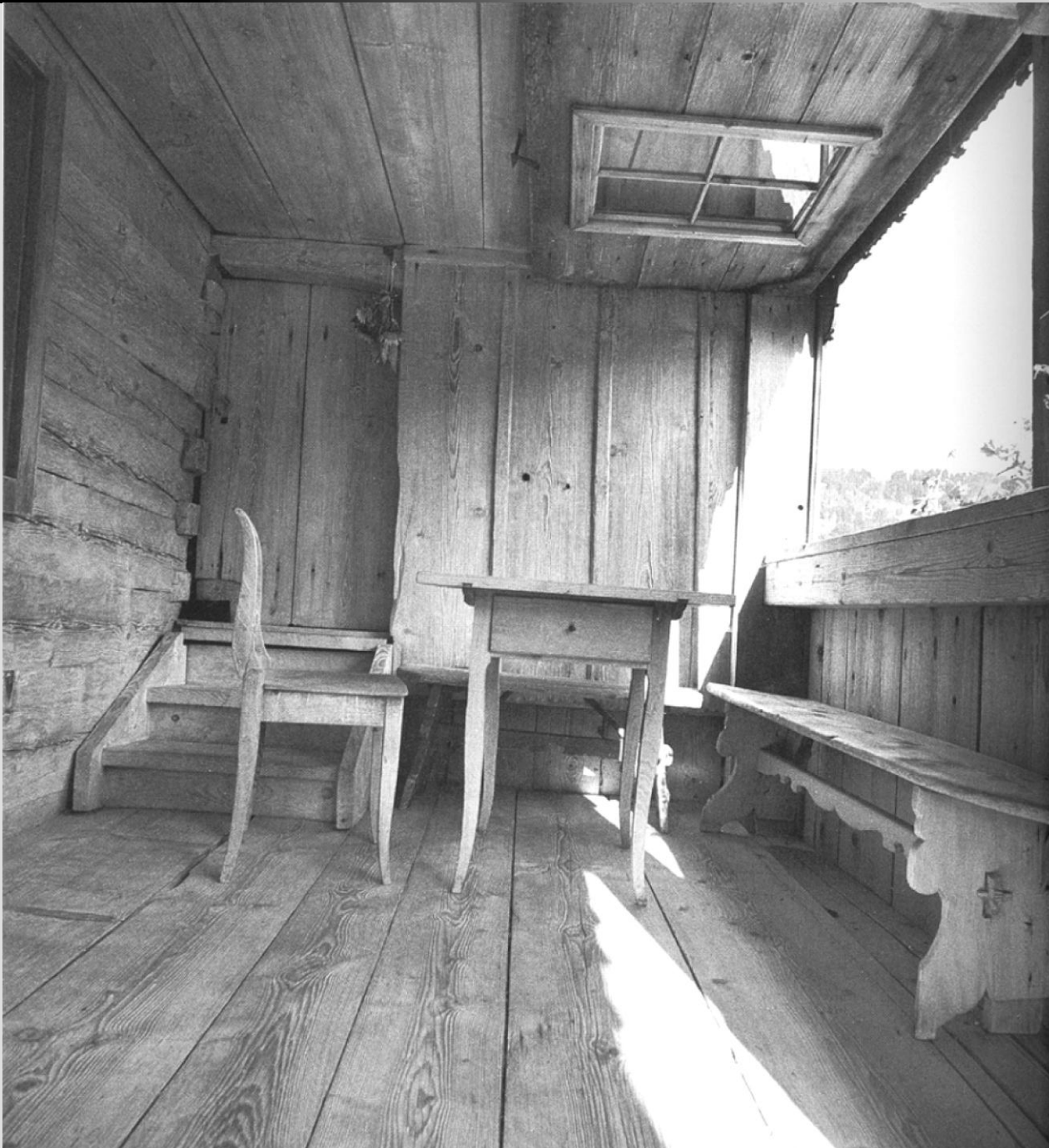














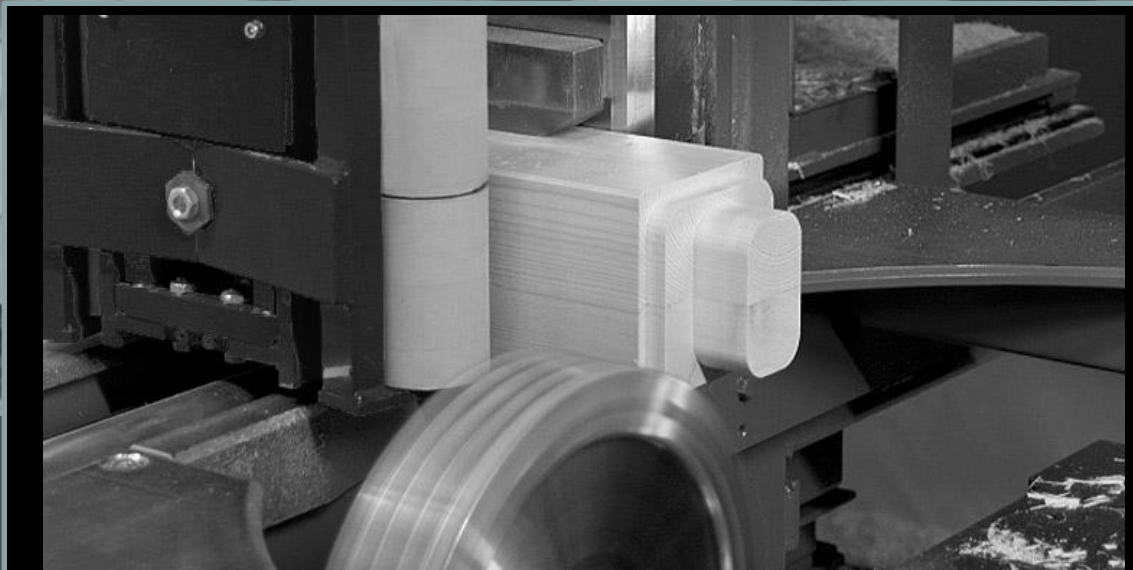
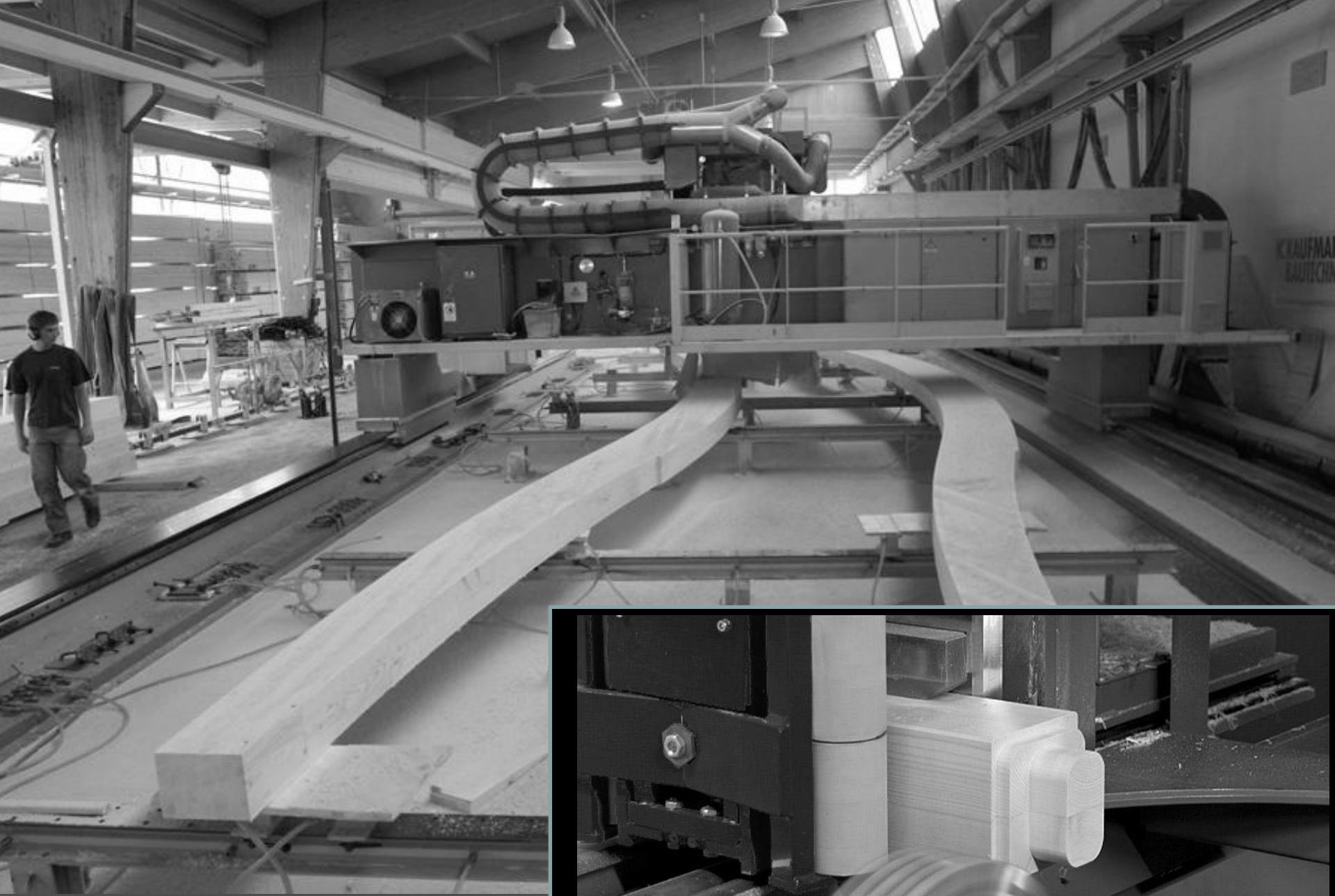


































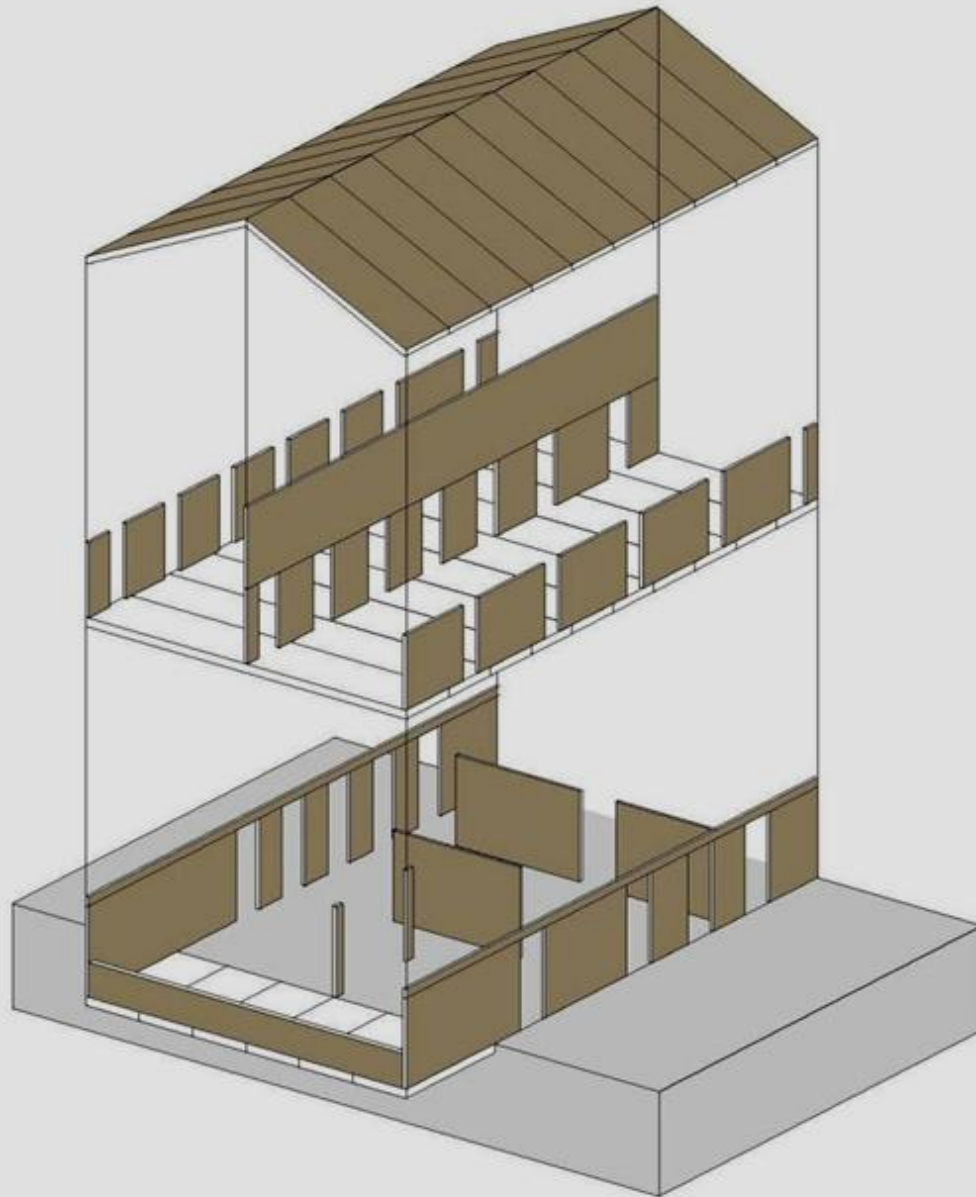












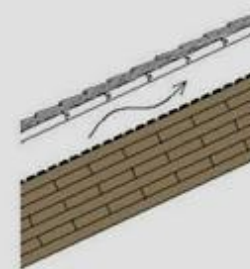
AUSSENWAND
AUFBAU VON AUSSEN NACH INNEN:
HOLZSCHINDELUNG
BRETTSPERRHOLZELEMENT SICHTBAR 162 MM



TRAGENDE ZWISCHENWAND:
BRETTSPERRHOLZELEMENT
SICHTBAR 162 MM



TRENNWAND:
DREISCHICHTPLATTE FICHTE
SICHTBAR 60 MM

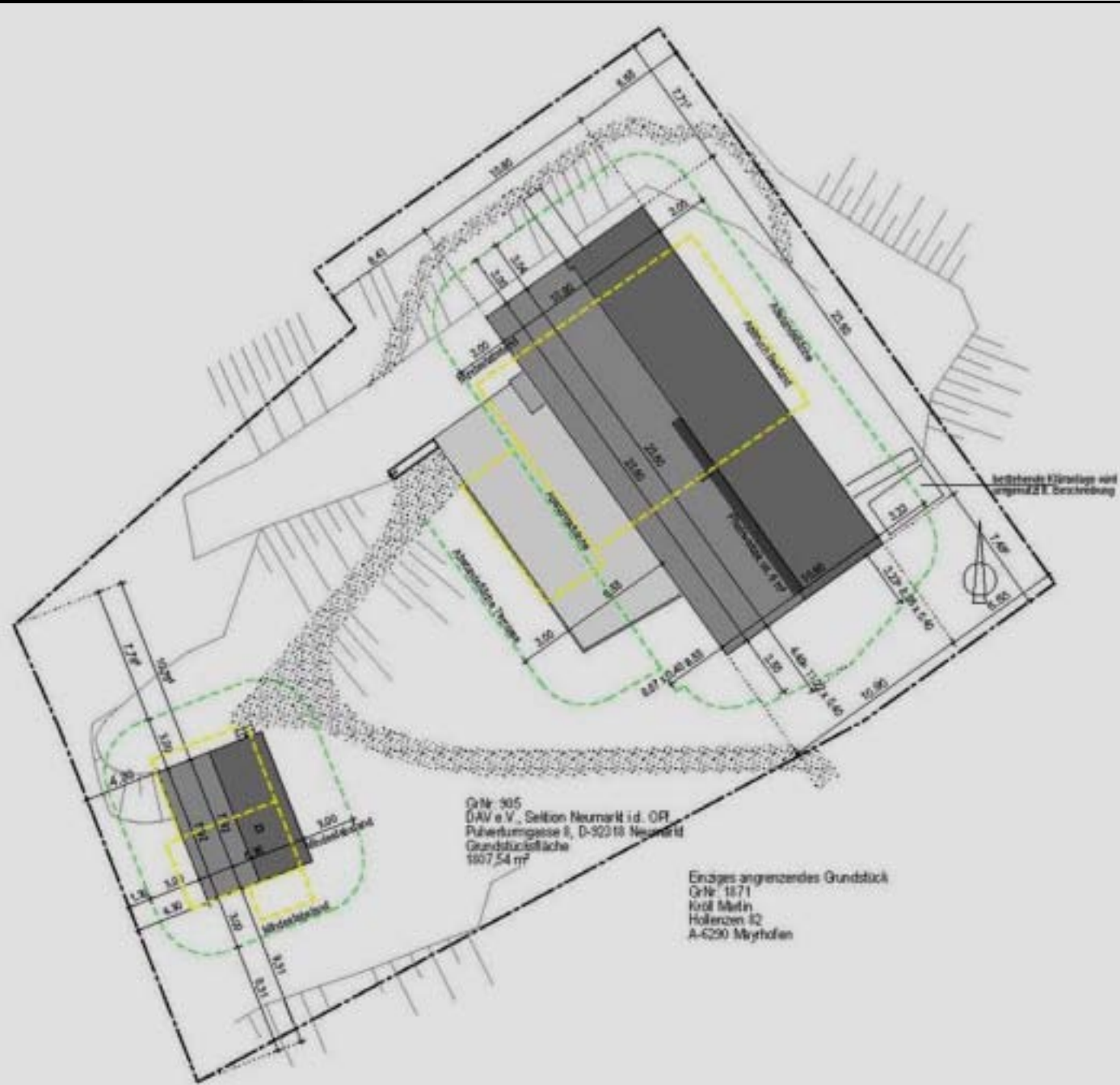


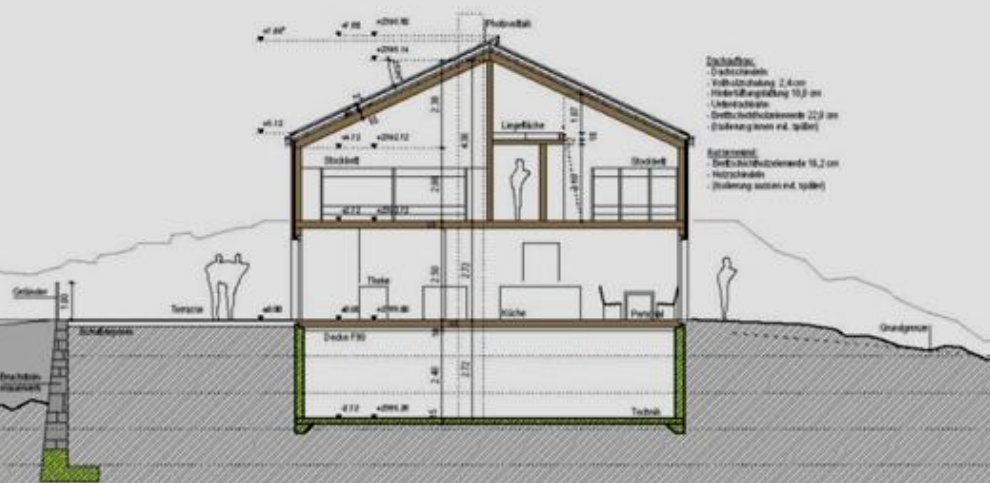
SATTELDACH
AUFBAU VON AUSSEN NACH INNEN:

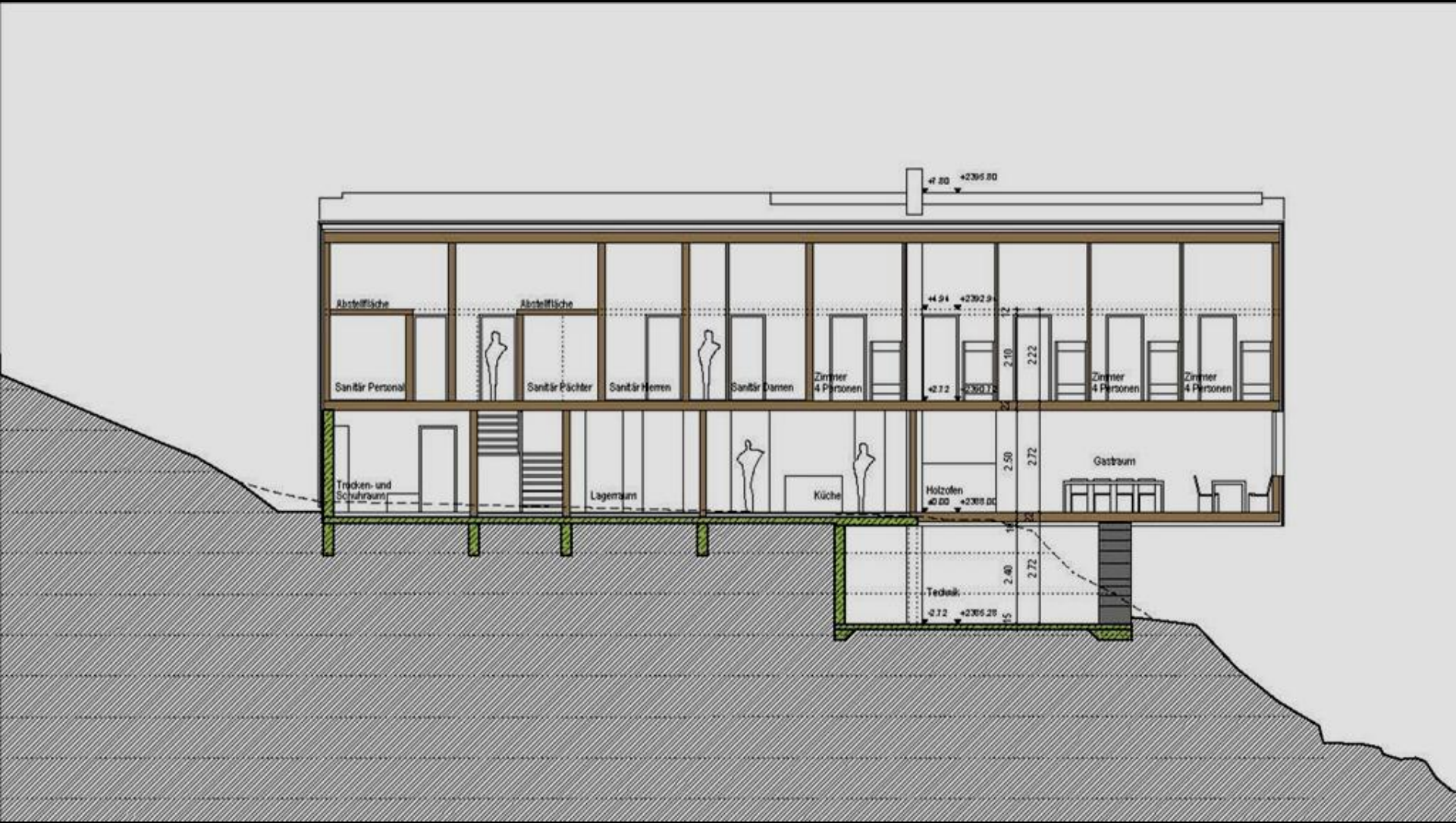
HOLZSCHINDELUNG
VOLLSCHALUNG FICHTE 27 MM
HINTERLÜFTUNGSLATTUNG 50/100 MM
UNTERDACHBAHN
BRETTSPERRHOLZELEMENT SICHTBAR 162 MM



ZWISCHENDECKE
AUFBAU VON OBEN NACH UNTEN:
BRETTSPERRELEMENT OBEN UND
UNTEN SICHTBAR 200 MM
MIT AKKUSTIKPROFIL



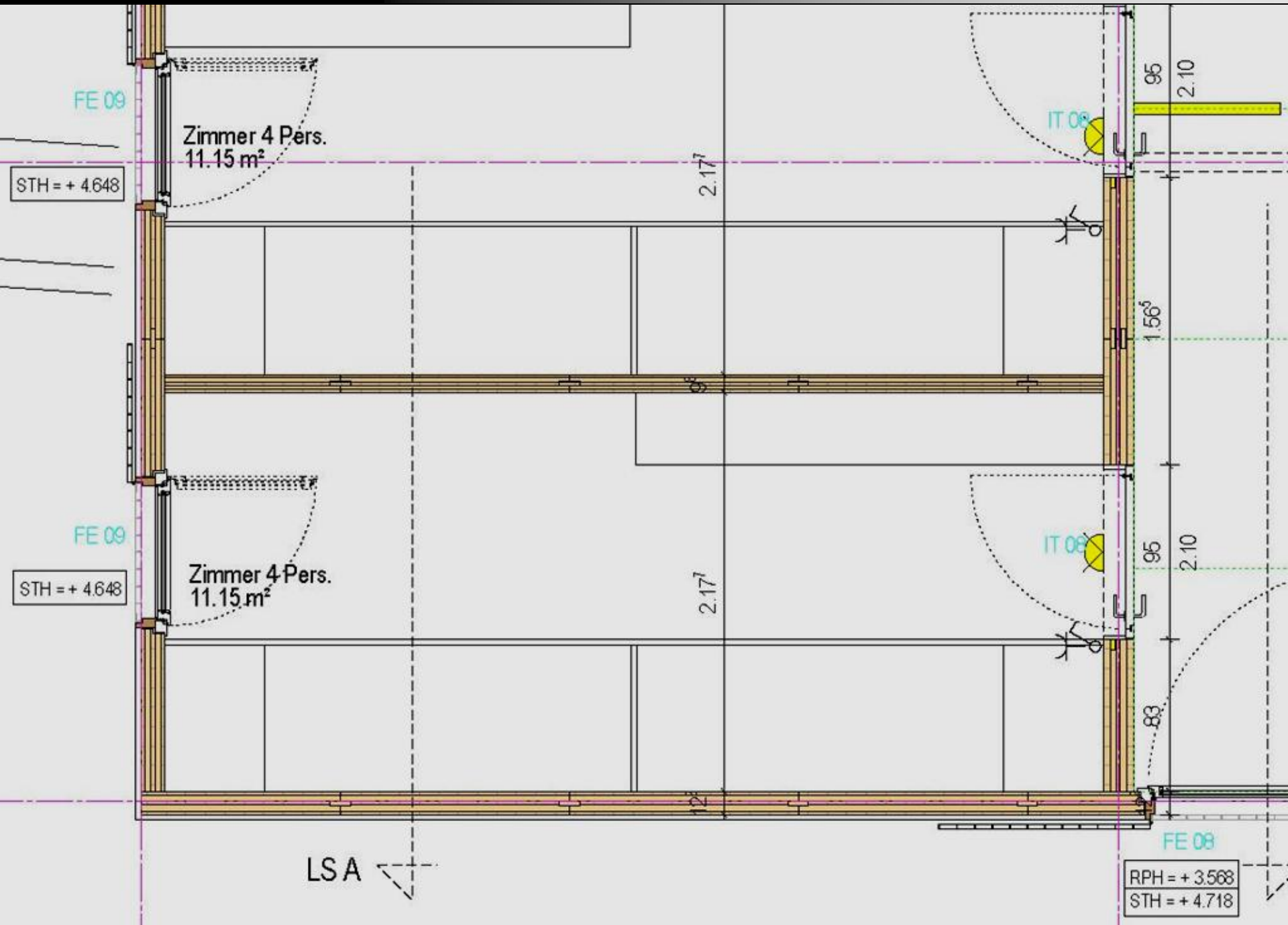






GFL
1807.54 m²

















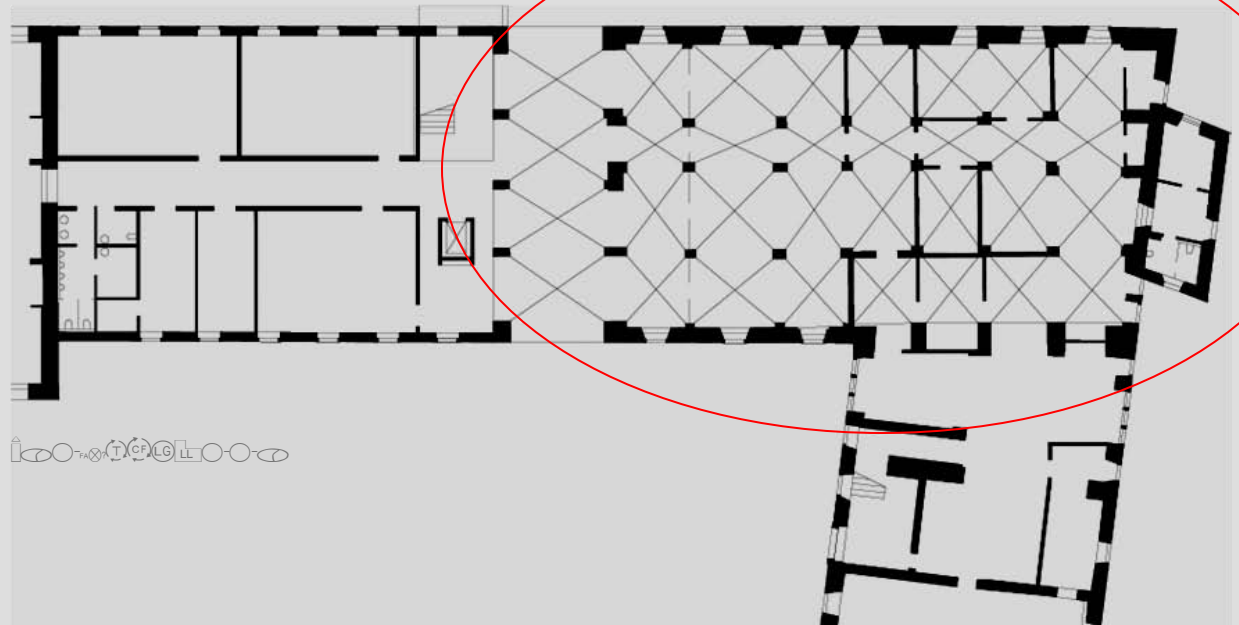






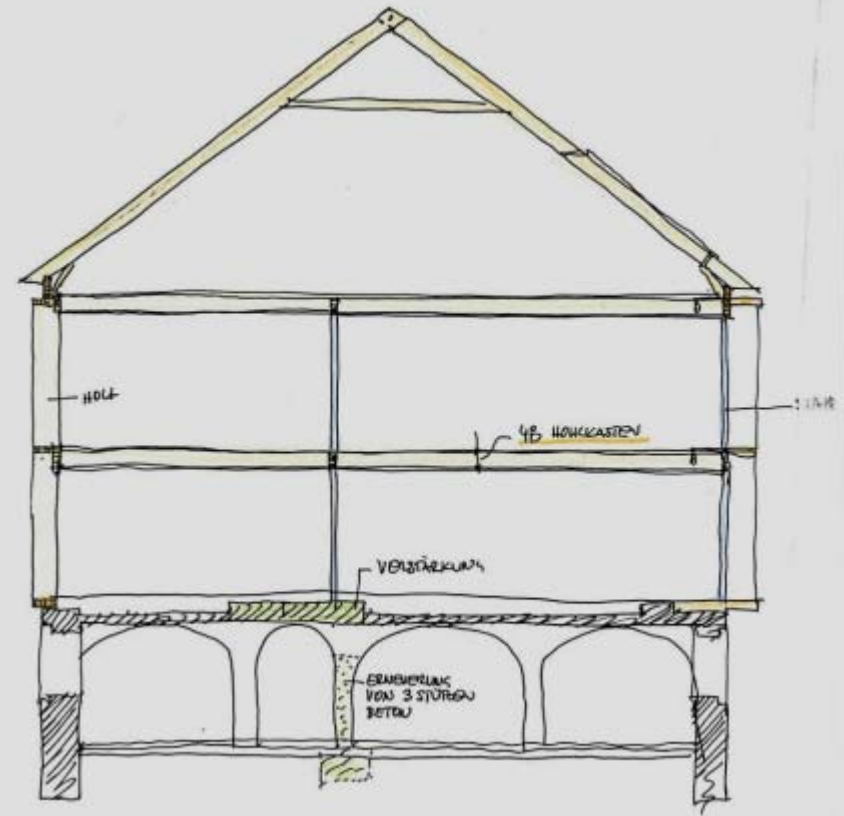
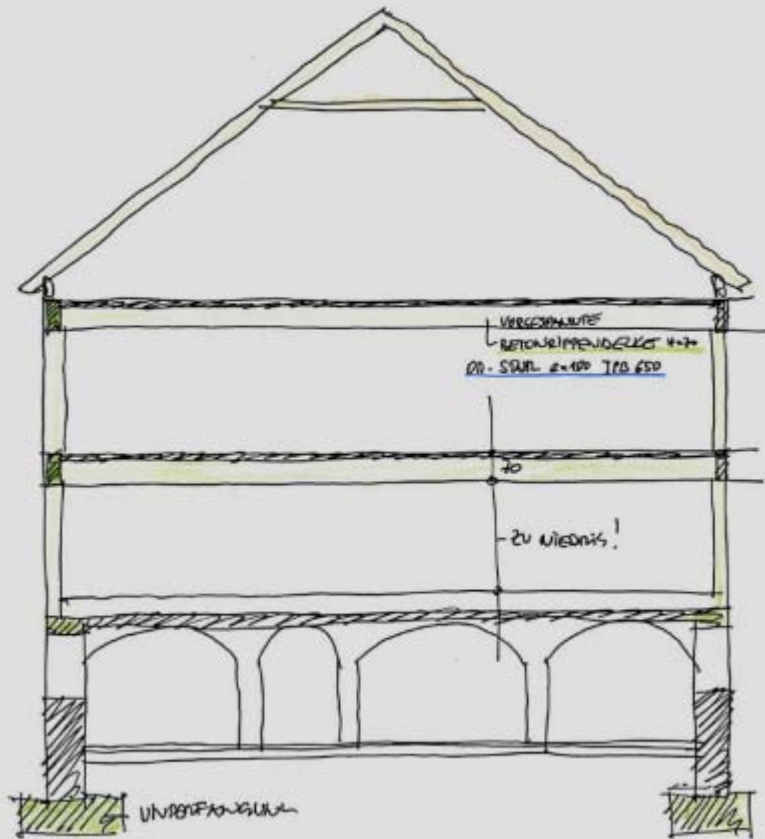






Gewicht Betondecke 1000 kg / m²

Gewicht Holzdecke 100 kg/m²









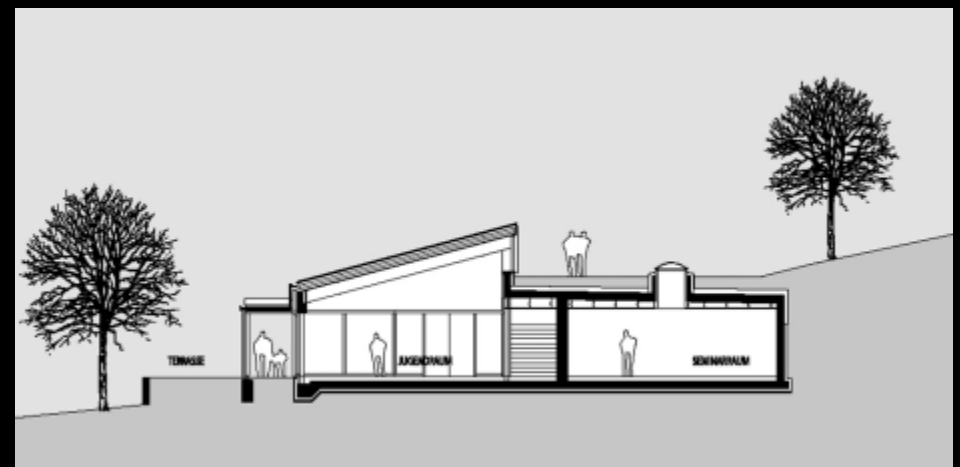
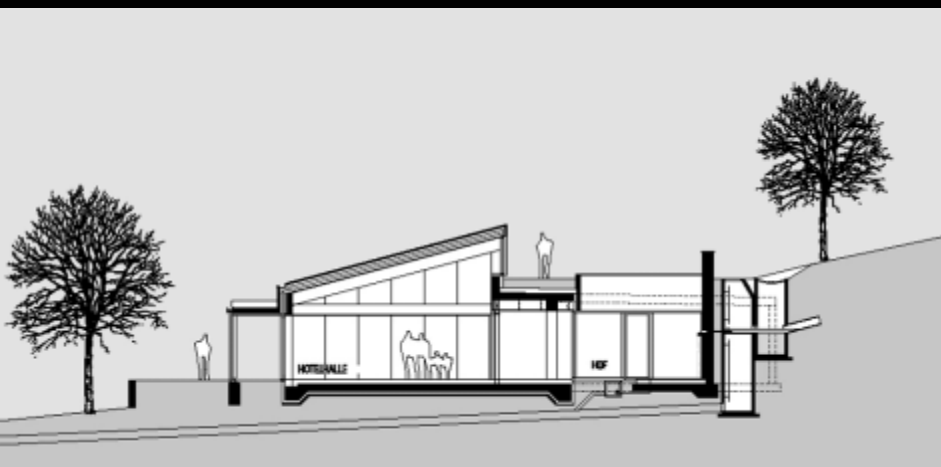
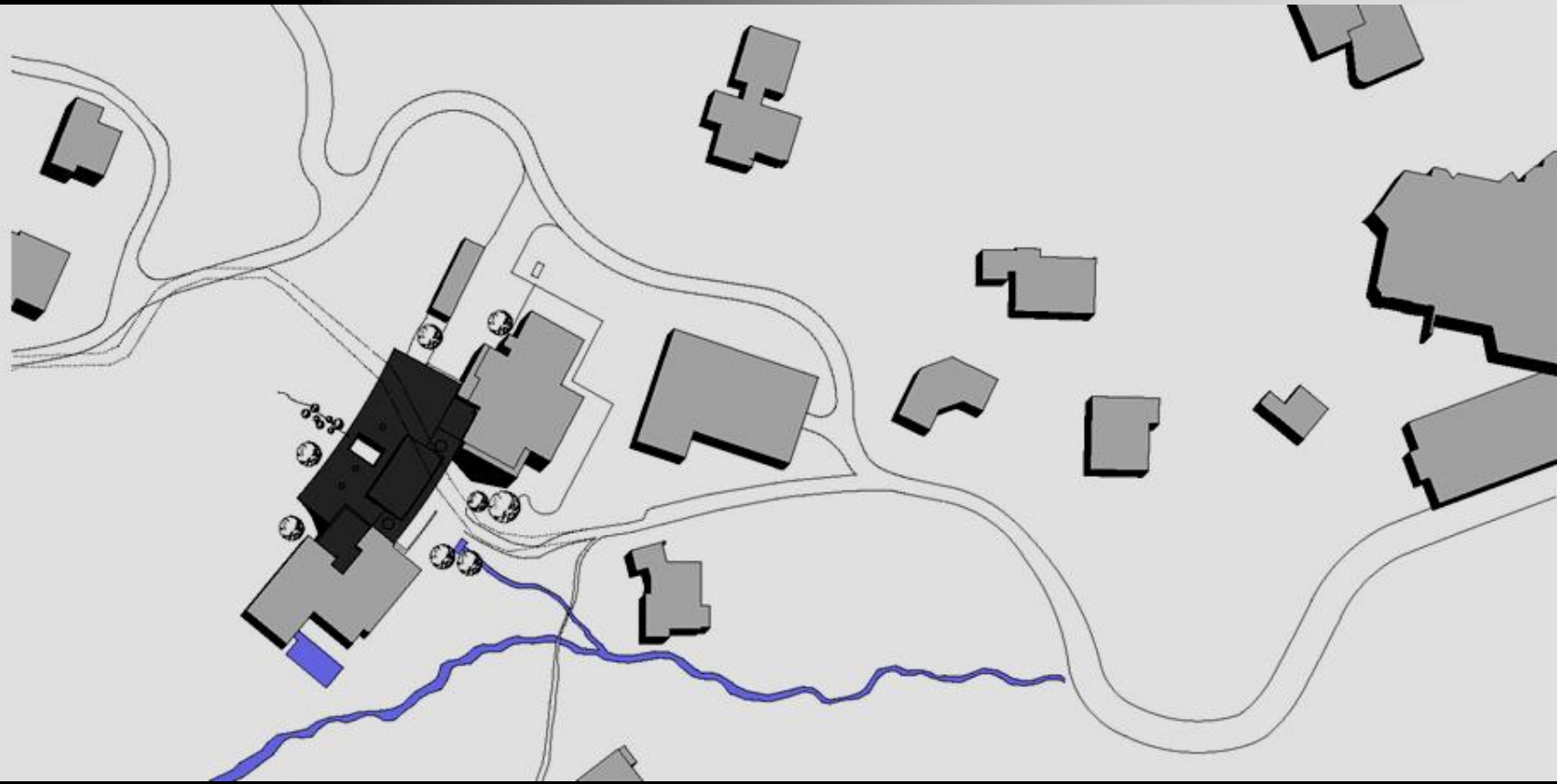
































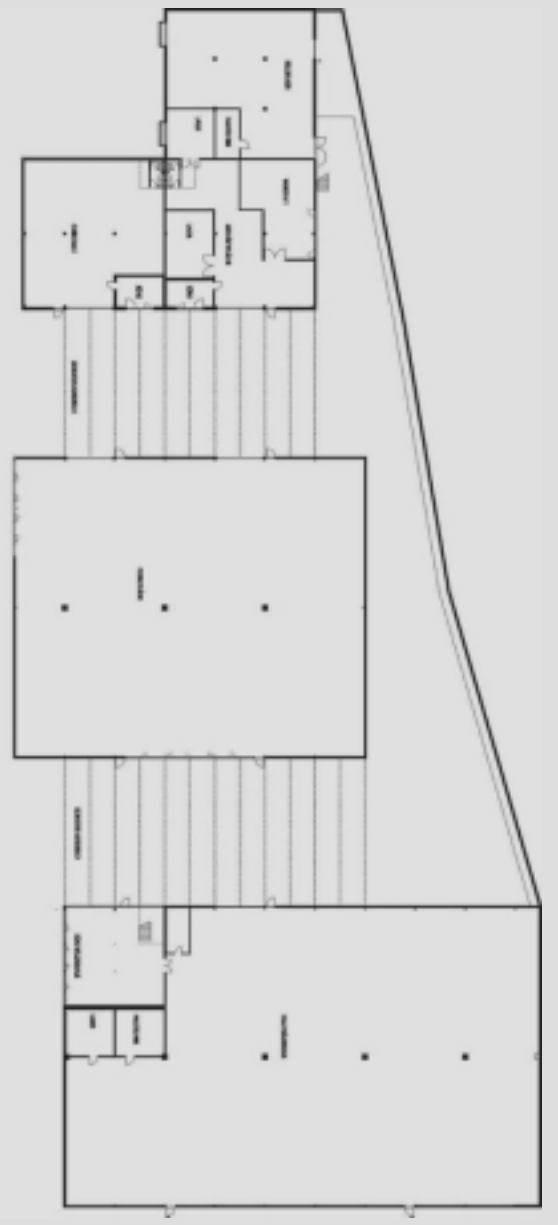




















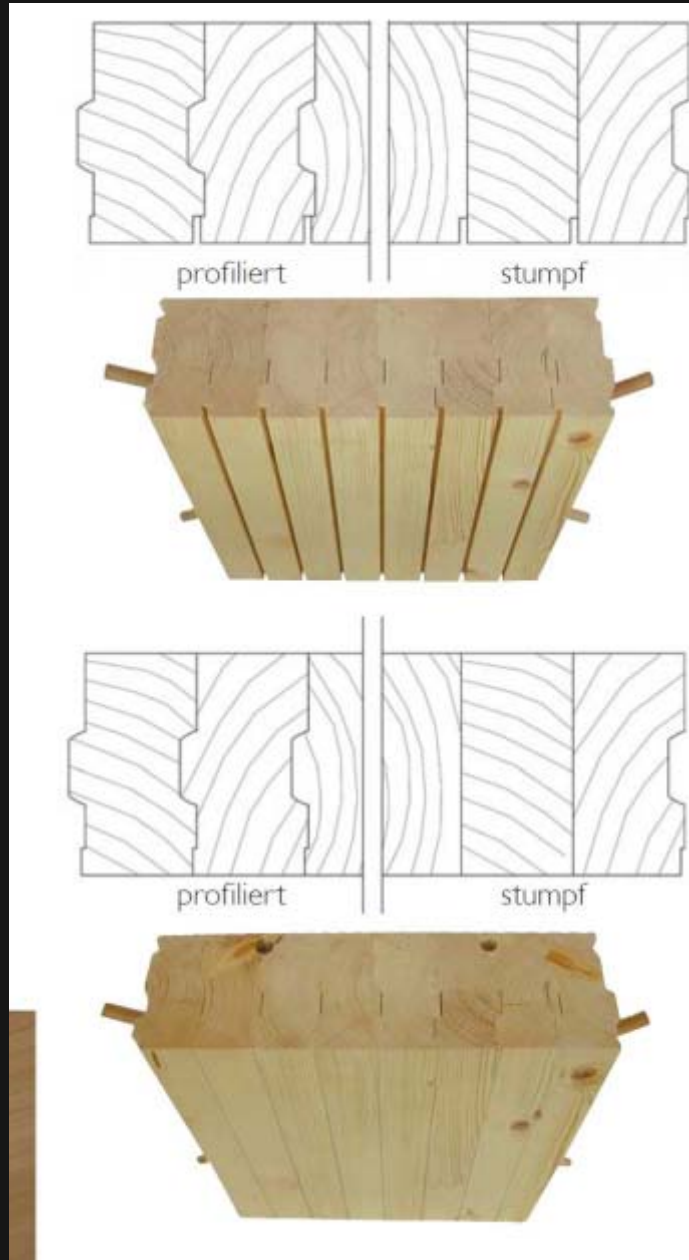












DD
DiagonalDielenholz

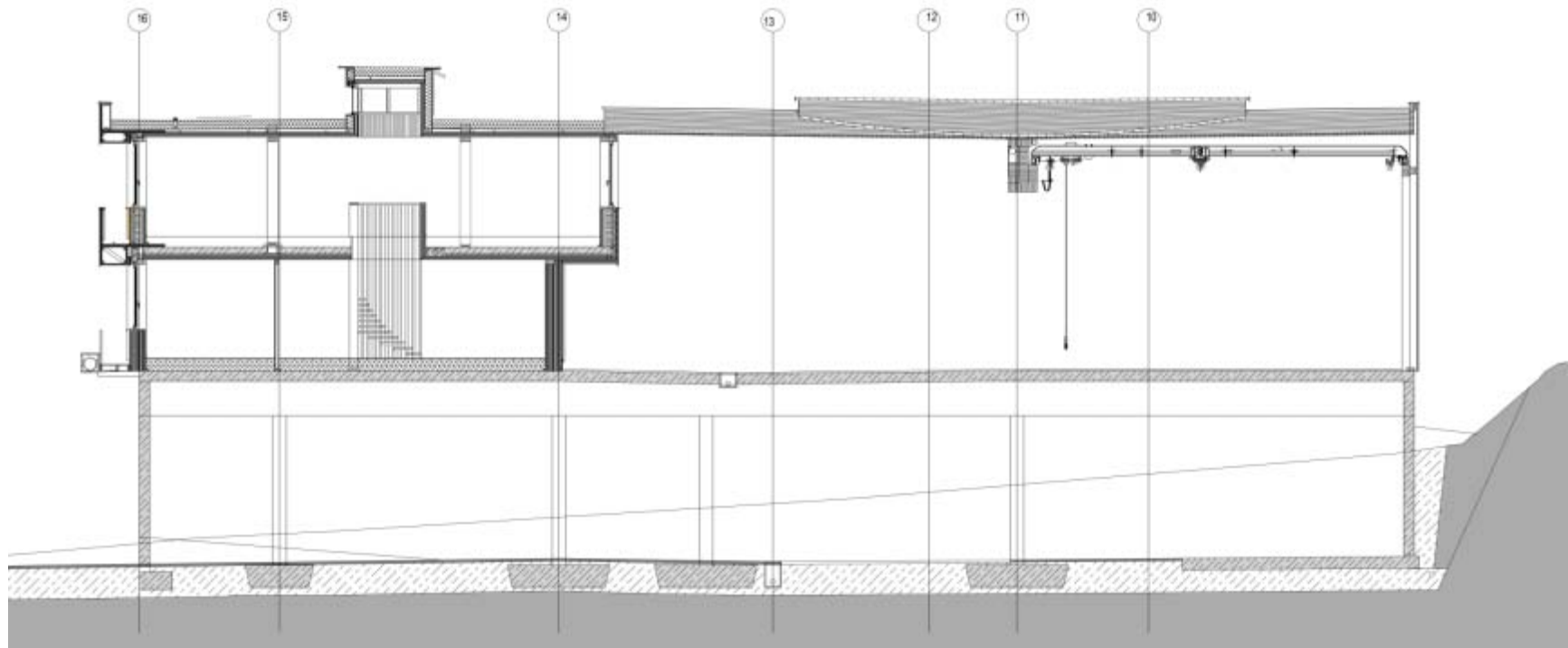
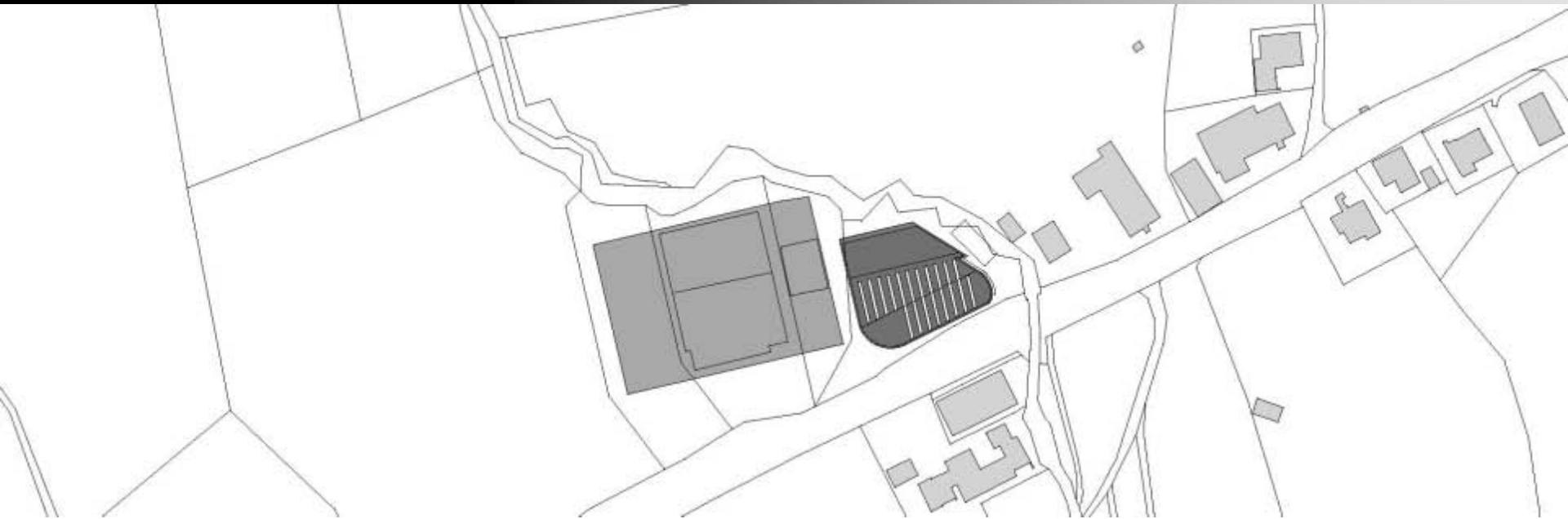
HOLZBAUTECHNIK
SOHM
Sohm GmbH

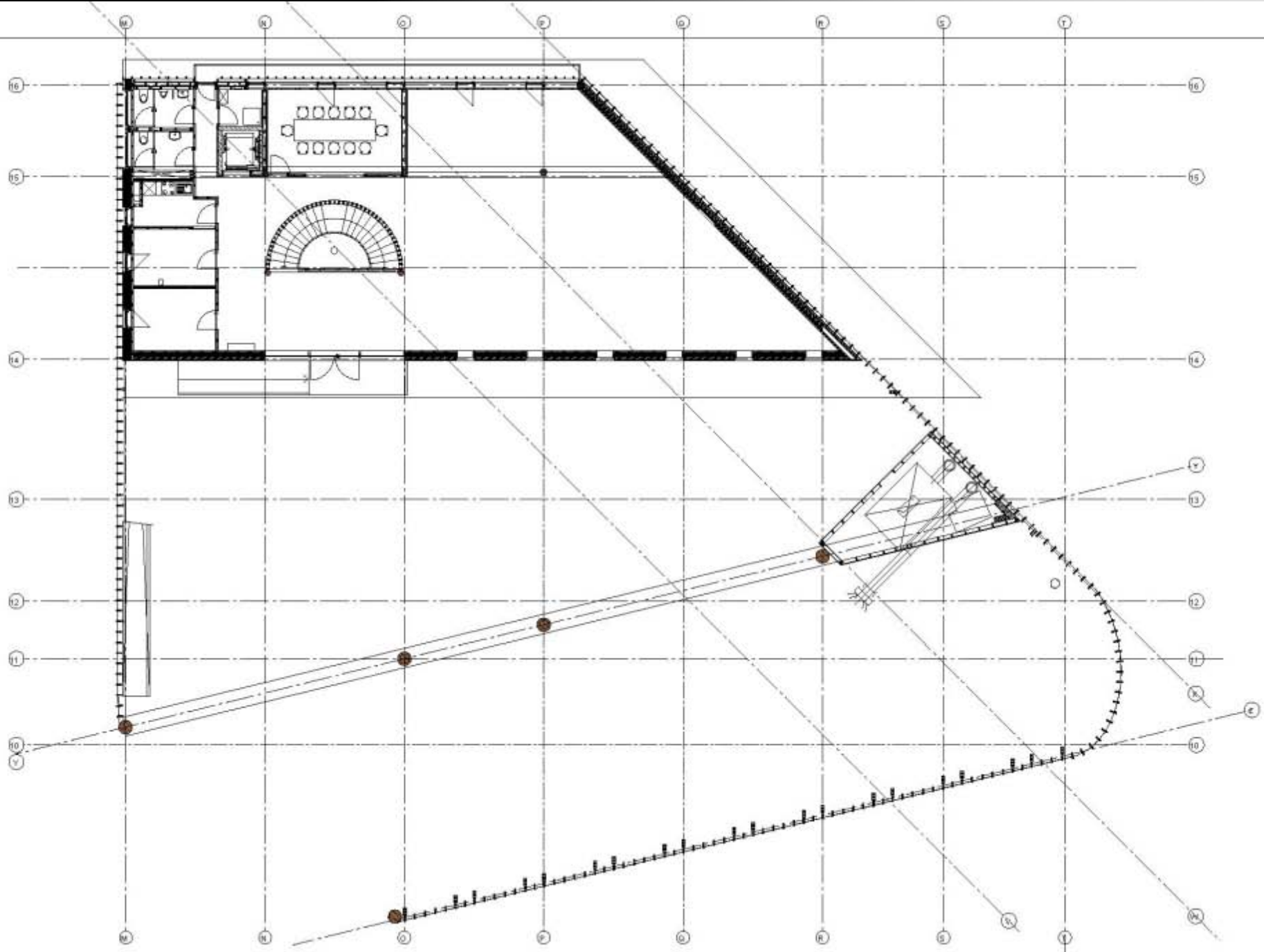
BOIS&FUTUR A
www.bois&futur.com

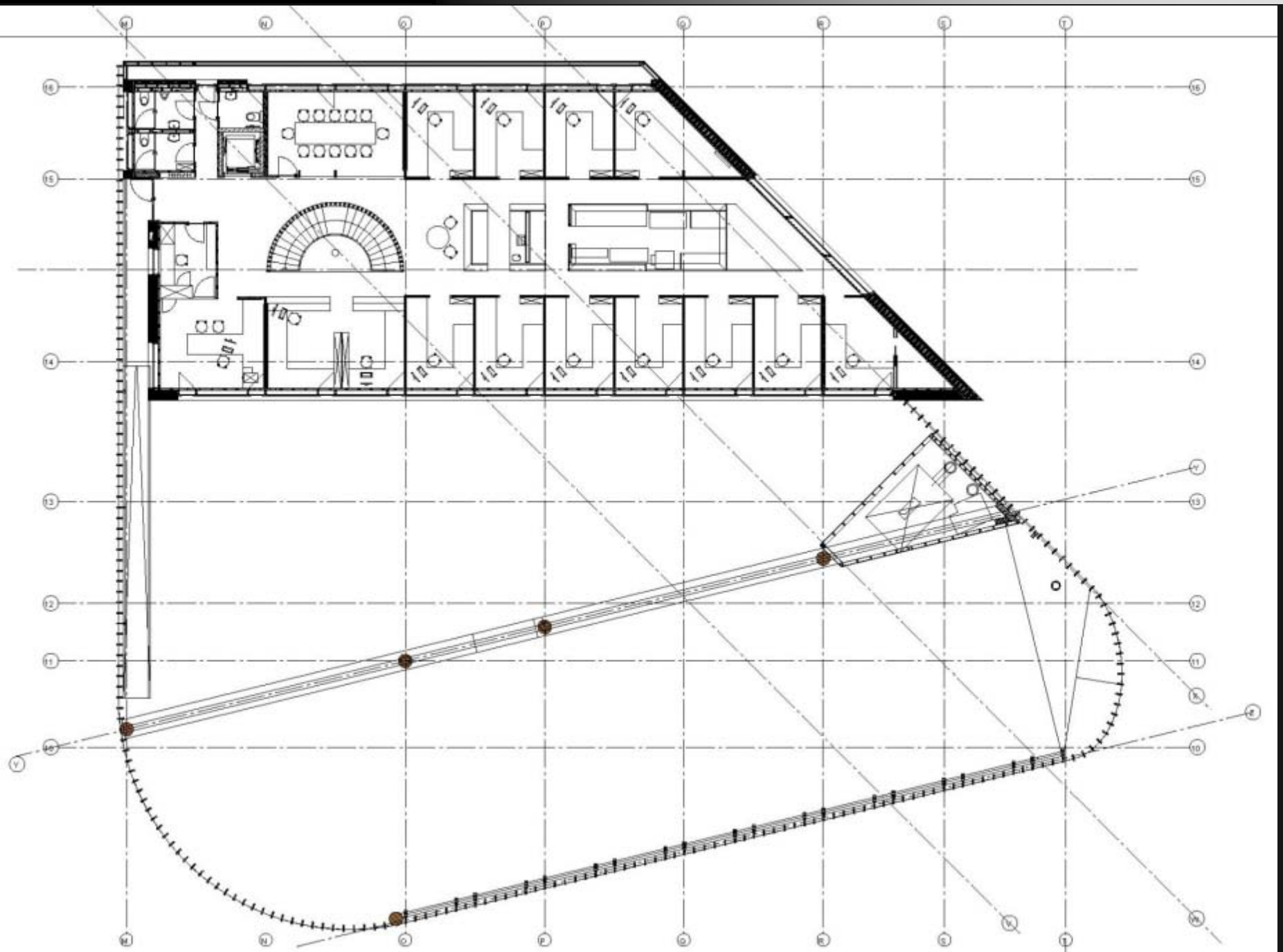
BOIS&FUTUR SAS
Quartier Berniquet
Chemin des Crisolles
60400 GENVRY

0 820 620 670
0-12 € TTC/min à partir d'un poste fixe

contact@bois&futur.com
www.bois&futur.com













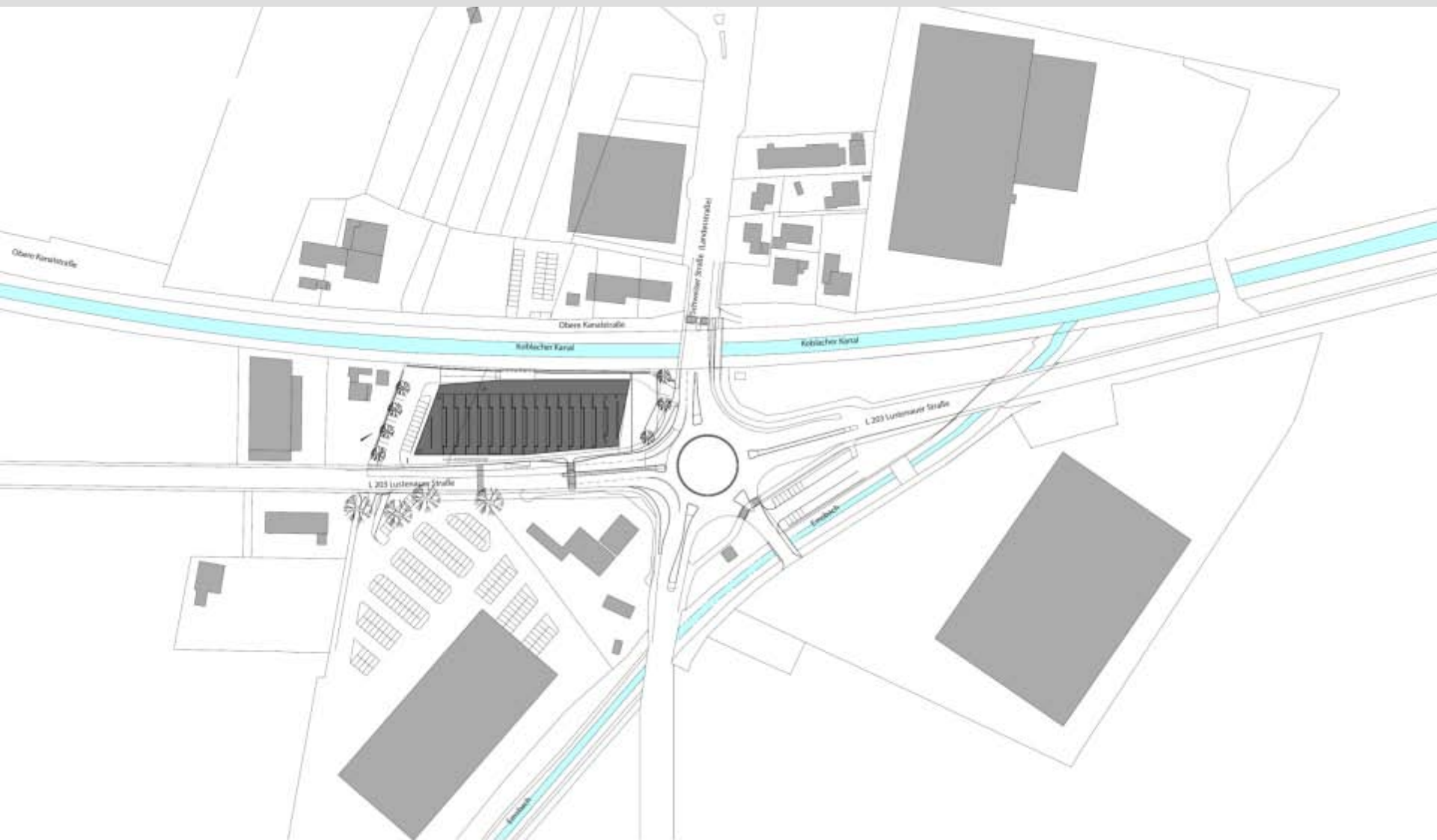


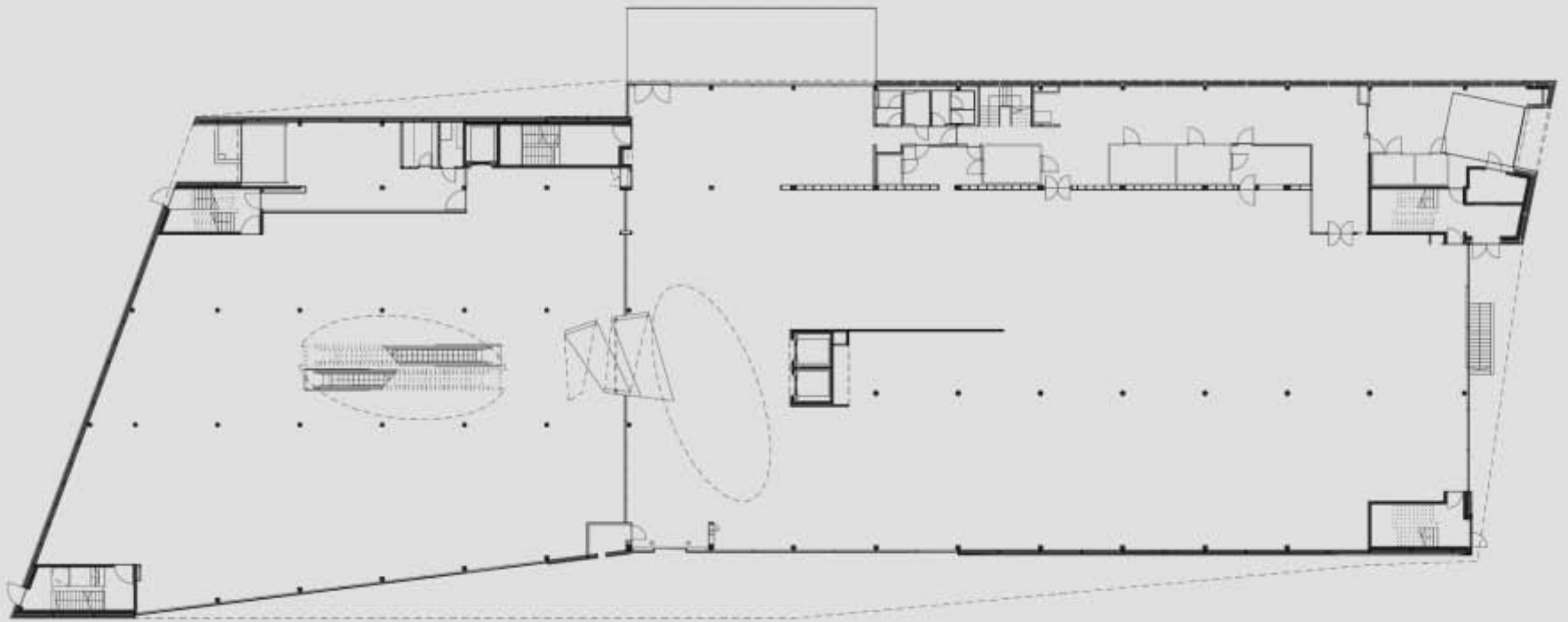
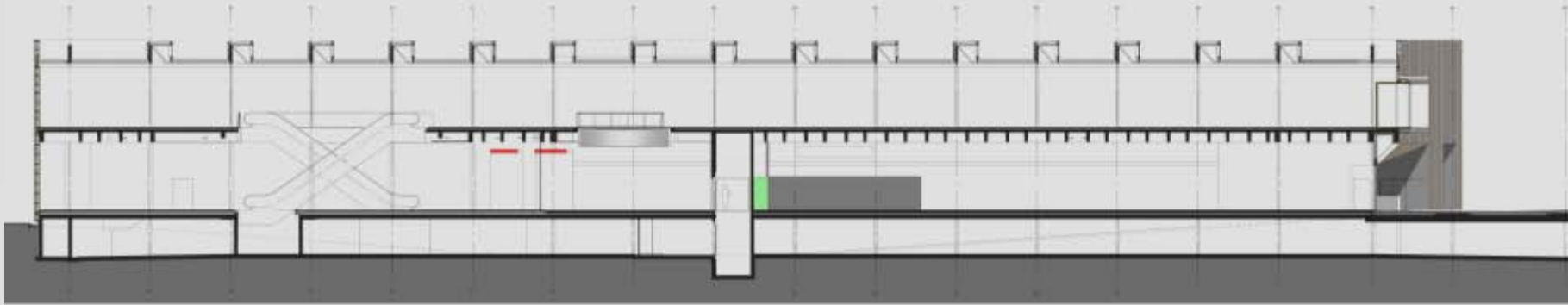






Lageplan





Erdgeschoss





















826 Moderne Holzbauarchitektur, Schwarzenberg • Foto: Christoph Lingg / Bregenzerwald Tourismus

Otto Kapfinger (ED)

HERMANN KAUFMANN WOOD WORKS

ökorationale baukunst – architecture durable

SPRINGER VERLAG